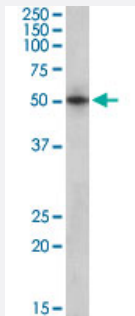


# SEPT4 polyclonal antibody

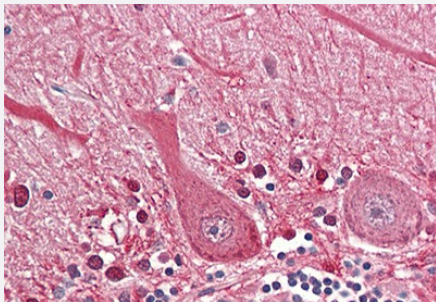
Catalog # PAB18964      Size 100 ug

## Applications



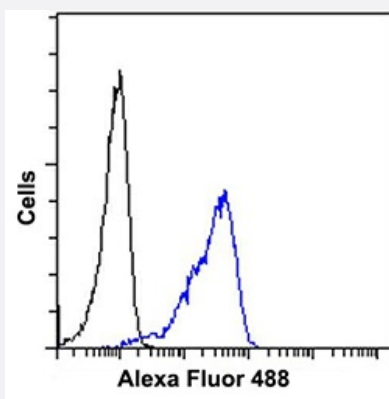
### Western Blot (Tissue lysate)

SEPT4 polyclonal antibody (Cat # PAB18964, 1 ug/mL) staining of human heart lysate (35 ug protein in RIPA buffer). Primary incubation was 1 hour. Detected by chemiluminescence.



### Immunohistochemistry (Formalin/PFA-fixed paraffin-embedded sections)

SEPT4 polyclonal antibody (Cat #PAB18964) (3.75 ug/mL) staining of paraffin embedded Human Cerebellum. Steamed antigen retrieval with citrate buffer pH 6, AP-staining.



### Flow Cytometry

SEPT4 polyclonal antibody (Cat #PAB18964) Flow cytometric analysis of paraformaldehyde fixed Jurkat cells (blue line), permeabilized with 0.5% Triton. Primary incubation 1hr (10 ug/mL) followed by Alexa Fluor 488 secondary antibody (1 ug/mL). IgG control: Unimmunized goat IgG (black line) followed by Alexa Fluor 488 secondary antibody.

## Specification

### Product Description

Goat polyclonal antibody raised against synthetic peptide of SEPT4.

<b>Immunogen</b>	A synthetic peptide corresponding to amino acids at internal region of human SEPT4.
<b>Sequence</b>	C-RNKLTRESGTD
<b>Host</b>	Goat
<b>Theoretical MW (kDa)</b>	50
<b>Reactivity</b>	Human, Mouse
<b>Specificity</b>	This antibody is expected to recognize isoform 1 (NP_004565.1), 3 (NP_536341.1) and 4 (NP_001185642.1). Amino acid numbering in name refers to NP_004565.1 sequence.
<b>Form</b>	Liquid
<b>Purification</b>	Antigen affinity purification
<b>Concentration</b>	0.5 mg/mL
<b>Recommend Usage</b>	ELISA (1:64000) Flow Cytometry (10 ug/mL) Immunohistochemistry (3.75 ug/mL) Western Blot (1-3 ug/mL) The optimal working dilution should be determined by the end user.
<b>Storage Buffer</b>	In 0.5 mg/mL in Tris saline, pH7.3 (0.5% BSA, 0.02% sodium azide)
<b>Storage Instruction</b>	Store at -20°C. Aliquot to avoid repeated freezing and thawing.
<b>Note</b>	This product contains sodium azide: a POISONOUS AND HAZARDOUS SUBSTANCE which should be handled by trained staff only.

## Applications

- Western Blot (Tissue lysate)

SEPT4 polyclonal antibody (Cat # PAB18964, 1 ug/mL) staining of human heart lysate (35 ug protein in RIPA buffer). Primary incubation was 1 hour. Detected by chemiluminescence.

- Immunohistochemistry (Formalin/PFA-fixed paraffin-embedded sections)

SEPT4 polyclonal antibody (Cat #PAB18964) (3.75 ug/mL) staining of paraffin embedded Human Cerebellum. Steamed antigen retrieval with citrate buffer pH 6, AP-staining.

- Enzyme-linked Immunoabsorbent Assay

- Flow Cytometry

SEPT4 polyclonal antibody (Cat #PAB18964) Flow cytometric analysis of paraformaldehyde fixed Jurkat cells (blue line), permeabilized with 0.5% Triton. Primary incubation 1hr (10 ug/mL) followed by Alexa Fluor 488 secondary antibody (1 ug/mL). IgG control: Unimmunized goat IgG (black line) followed by Alexa Fluor 488 secondary antibody.

## Gene Info — SEPT4

**Entrez GeneID** [5414](#)

**Protein Accession#** [NP\\_004565.1;NP\\_536341.1;NP\\_001185642.1](#)

**Gene Name** SEPT4

**Gene Alias** ARTS, BRADEION, CE5B3, H5, MART, PNUTL2, SEP4, hCDCREL-2, hucep-7

**Gene Description** septin 4

**Omim ID** [603696](#)

**Gene Ontology** [Hyperlink](#)

**Gene Summary** This gene is a member of the septin gene family of nucleotide binding proteins, originally described in yeast as cell division cycle regulatory proteins. Septins are highly conserved in yeast, Drosophila, and mouse and appear to regulate cytoskeletal organization. The protein encoded by this gene is thought to be part of a complex involved in cytokinesis. Alternatively spliced variants which encode different protein isoforms have been described; however, not all variants have been fully characterized. [provided by RefSeq]

**Other Designations** cell division control-related protein 2|cerebral protein 7|peanut-like 2|septin-M

## Disease

- [Breast cancer](#)
- [Breast Neoplasms](#)
- [Genetic Predisposition to Disease](#)