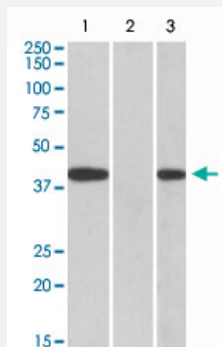


FANCF polyclonal antibody

Catalog # PAB18961 Size 100 ug

Applications



Western Blot (Transfected lysate)

HEK293 lysate (10 ug protein in RIPA buffer) overexpressing human FANCF with C-terminal MYC tag probed with FANCF polyclonal antibody (Cat # PAB18961, 0.5 ug/mL) in Lane A and probed with anti-MYC Tag (1/1000) in lane C. Mock-transfected HEK293 probed with FANCF polyclonal antibody (Cat # PAB18961, 1mg/mL) in Lane B. Primary incubations were for 1 hour. Detected by chemiluminescence.

Specification

Product Description	Goat polyclonal antibody raised against synthetic peptide of FANCF.
Immunogen	A synthetic peptide corresponding to amino acids at C-terminus of humanFANCF.
Sequence	C-RQVLGLSAGLSSV
Host	Goat
Theoretical MW (kDa)	40
Reactivity	Human
Form	Liquid
Purification	Antigen affinity purification
Concentration	0.5 mg/mL
Recommend Usage	ELISA (1:32000) Western Blot (0.1-0.5 ug/mL) The optimal working dilution should be determined by the end user.

Storage Buffer	In 0.5 mg/mL in Tris saline, pH7.3 (0.5% BSA, 0.02% sodium azide)
Storage Instruction	Store at -20°C. Aliquot to avoid repeated freezing and thawing.
Note	This product contains sodium azide: a POISONOUS AND HAZARDOUS SUBSTANCE which should be handled by trained staff only.

Applications

- Western Blot (Transfected lysate)

HEK293 lysate (10 ug protein in RIPA buffer) overexpressing human FANCF with C-terminal MYC tag probed with FANCF polyclonal antibody (Cat # PAB18961, 0.5 ug/mL) in Lane A and probed with anti-MYC Tag (1/1000) in lane C. Mock-transfected HEK293 probed with FANCF polyclonal antibody (Cat # PAB18961, 1mg/mL) in Lane B. Primary incubations were for 1 hour. Detected by chemiluminescence.

- Enzyme-linked Immunoabsorbent Assay

Gene Info — FANCF

Entrez GeneID	2188
Protein Accession#	NP_073562
Gene Name	FANCF
Gene Alias	FAF, MGC126856
Gene Description	Fanconi anemia, complementation group F
Omim ID	603467
Gene Ontology	Hyperlink
Gene Summary	The Fanconi anemia complementation group (FANC) currently includes FANCA, FANCB, FANCC, FANCD1 (also called BRCA2), FANCD2, FANCE, FANCF, FANCG, FANCI, FANCI (also called BRIP1), FANCL, FANCM and FANCN (also called PALB2). The previously defined group FANCH is the same as FANCA. Fanconi anemia is a genetically heterogeneous recessive disorder characterized by cytogenetic instability, hypersensitivity to DNA crosslinking agents, increased chromosomal breakage, and defective DNA repair. The members of the Fanconi anemia complementation group do not share sequence similarity; they are related by their assembly into a common nuclear protein complex. This gene encodes the protein for complementation group F. [provided by RefSeq]
Other Designations	-

Disease

- [Adenocarcinoma](#)
- [Breast cancer](#)
- [Breast Neoplasms](#)
- [Genetic Predisposition to Disease](#)
- [Neoplasms](#)
- [Ovarian cancer](#)
- [Ovarian Neoplasms](#)
- [Pancreatic Neoplasms](#)