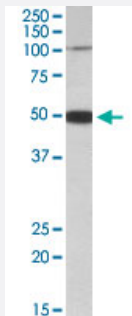


PTCHD1 polyclonal antibody

Catalog # PAB18958 Size 100 ug

Applications



Western Blot (Tissue lysate)

PTCHD1 polyclonal antibody (Cat # PAB18958, 0.5 ug/mL) staining of human cerebellum lysate (35 ug protein in RIPA buffer). Primary incubation was 1 hour. Detected by chemiluminescence.

Specification

Product Description	Goat polyclonal antibody raised against synthetic peptide of PTCHD1.
Immunogen	A synthetic peptide corresponding to amino acids at internal region of human PTCHD1.
Sequence	C-DFQKTSRVSER
Host	Goat
Reactivity	Human
Form	Liquid
Purification	Antigen affinity purification
Concentration	0.5 mg/mL
Recommend Usage	ELISA (1:16000) Western blot (0.5-2 ug/mL) The optimal working dilution should be determined by the end user.
Storage Buffer	In 0.5 mg/mL in Tris saline, pH7.3 (0.5% BSA, 0.02% sodium azide)

Storage Instruction

Store at -20°C.
Aliquot to avoid repeated freezing and thawing.

Note

This product contains sodium azide: a POISONOUS AND HAZARDOUS SUBSTANCE which should be handled by trained staff only.

Applications

- Western Blot (Tissue lysate)

PTCHD1 polyclonal antibody (Cat # PAB18958, 0.5 ug/mL) staining of human cerebellum lysate (35 ug protein in RIPA buffer). Primary incubation was 1 hour. Detected by chemiluminescence.

- Enzyme-linked Immunoabsorbent Assay

Gene Info — PTCHD1

Entrez GeneID[139411](#)**Protein Accession#**[NP_775766.2](#)**Gene Name**

PTCHD1

Gene Alias

FLJ30296, MGC149798

Gene Description

patched domain containing 1

Gene Ontology[Hyperlink](#)**Other Designations**

OTTHUMP00000023055

Disease

- [Child Development Disorders](#)
- [Genetic Predisposition to Disease](#)