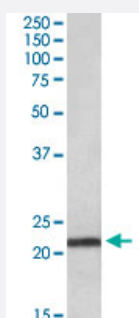


TMEM205 polyclonal antibody

Catalog # PAB18950 Size 100 ug

Applications



Western Blot (Tissue lysate)

TMEM205 polyclonal antibody (Cat # PAB18950, 0.03 ug/mL) staining of human pancreas lysate (35 ug protein in RIPA buffer). Primary incubation was 1 hour. Detected by chemiluminescence.

Specification

Product Description	Goat polyclonal antibody raised against synthetic peptide of TMEM205.
Immunogen	A synthetic peptide corresponding to amino acids at internal region of human TMEM205.
Sequence	C-PDPYRQLREK
Host	Goat
Theoretical MW (kDa)	22
Reactivity	Human
Specificity	Reported variants represent identical protein: NP_940938.1, NP_212133.1, NP_001138888.1
Form	Liquid
Purification	Antigen affinity purification
Concentration	0.5 mg/mL
Recommend Usage	ELISA (1:16000) Western Blot (0.03-0.1 ug/mL) The optimal working dilution should be determined by the end user.

Storage Buffer	In 0.5 mg/mL in Tris saline, pH7.3 (0.5% BSA, 0.02% sodium azide)
Storage Instruction	Store at -20°C. Aliquot to avoid repeated freezing and thawing.
Note	This product contains sodium azide: a POISONOUS AND HAZARDOUS SUBSTANCE which should be handled by trained staff only.

Applications

- Western Blot (Tissue lysate)

TMEM205 polyclonal antibody (Cat # PAB18950, 0.03 ug/mL) staining of human pancreas lysate (35 ug protein in RIPA buffer). Primary incubation was 1 hour. Detected by chemiluminescence.

- Enzyme-linked Immunoabsorbent Assay

Gene Info — TMEM205

Entrez GeneID	374882
Protein Accession#	NP_212133.1
Gene Name	TMEM205
Gene Alias	MGC110858, UNQ501
Gene Description	transmembrane protein 205
Gene Ontology	Hyperlink
Other Designations	MBC3205