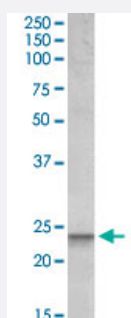


BBC3 polyclonal antibody

Catalog # PAB18947 Size 100 ug

Applications



Western Blot (Cell lysate)

BBC3 polyclonal antibody (Cat # PAB18947, 0.1 ug/mL) staining of human peripheral blood lymphocytes (PBL) lysate (35 ug protein in RIPA buffer). Primary incubation was 1 hour. Detected by chemiluminescence.

Specification

Product Description	Goat polyclonal antibody raised against synthetic peptide of BBC3.
Immunogen	A synthetic peptide corresponding to amino acids at internal region of human BBC3.
Sequence	C-DGGRPQRTVR
Host	Goat
Theoretical MW (kDa)	24
Reactivity	Human
Specificity	This antibody is expected to recognize isoform 1 (NP_001120712.1) only.
Form	Liquid
Purification	Antigen affinity purification
Concentration	0.5 mg/mL
Recommend Usage	ELISA (1:16000) Western Blot (0.1-0.3 ug/mL) The optimal working dilution should be determined by the end user.

Storage Buffer	In 0.5 mg/mL in Tris saline, pH7.3 (0.5% BSA, 0.02% sodium azide)
Storage Instruction	Store at -20°C. Aliquot to avoid repeated freezing and thawing.
Note	This product contains sodium azide: a POISONOUS AND HAZARDOUS SUBSTANCE which should be handled by trained staff only.

Applications

- Western Blot (Cell lysate)

BBC3 polyclonal antibody (Cat # PAB18947, 0.1 ug/mL) staining of human peripheral blood lymphocytes (PBL) lysate (35 ug protein in RIPA buffer). Primary incubation was 1 hour. Detected by chemiluminescence.

- Enzyme-linked Immunoabsorbent Assay

Gene Info — BBC3

Entrez GeneID	27113
Protein Accession#	NP_001120712.1
Gene Name	BBC3
Gene Alias	JFY1, PUMA
Gene Description	BCL2 binding component 3
Omim ID	605854
Gene Ontology	Hyperlink
Other Designations	Bcl-2 binding component 3

Pathway

- [p53 signaling pathway](#)