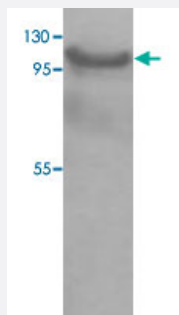


# USO1 polyclonal antibody

Catalog # PAB18912      Size 100 ug

## Applications



### Western Blot (Tissue lysate)

Western blot analysis of human fetal kidney lysate with USO1 polyclonal antibody (Cat # PAB18912) at 1 : 250 dilution.

## Specification

<b>Product Description</b>	Rabbit polyclonal antibody raised against synthetic peptide of USO1.
<b>Immunogen</b>	A synthetic peptide corresponding to 15 amino acids of human USO1.
<b>Host</b>	Rabbit
<b>Reactivity</b>	Human
<b>Form</b>	Liquid
<b>Recommend Usage</b>	ELISA (1:20000-1:80000) Western Blot (1:200-1:2000) The optimal working dilution should be determined by the end user.
<b>Storage Buffer</b>	In buffer containing 0.02% sodium azide
<b>Storage Instruction</b>	Store at 4°C for three months. For long term storage store at -20°C. Aliquot to avoid repeated freezing and thawing.
<b>Note</b>	This product contains sodium azide: a POISONOUS AND HAZARDOUS SUBSTANCE which should be handled by trained staff only.

## Applications

- Western Blot (Tissue lysate)

Western blot analysis of human fetal kidney lysate with USO1 polyclonal antibody (Cat # PAB18912) at 1 : 250 dilution.

- Enzyme-linked Immunoabsorbent Assay

## Gene Info — USO1

Entrez GeneID [8615](#)

Protein Accession# [NM\\_003715](#)

Gene Name USO1

Gene Alias P115, TAP, VDP

Gene Description USO1 homolog, vesicle docking protein (yeast)

Omim ID [603344](#)

Gene Ontology [Hyperlink](#)

**Gene Summary**

The protein encoded by this gene is a peripheral membrane protein which recycles between the cytosol and the Golgi apparatus during interphase. It is regulated by phosphorylation: dephosphorylated protein associates with the Golgi membrane and dissociates from the membrane upon phosphorylation. Ras-associated protein 1 recruits this protein to coat protein complex II (COPII) vesicles during budding from the endoplasmic reticulum, where it interacts with a set of COPII vesicle-associated SNAREs to form a cis-SNARE complex that promotes targeting to the Golgi apparatus. Transport from the ER to the cis/medial Golgi compartments requires the action of this gene product, GM130 and giantin in a sequential manner. [provided by RefSeq]

**Other Designations**

USO1 homolog, vesicle docking protein|transcytosis associated protein|transcytosis-associated protein|vesicle docking protein p115