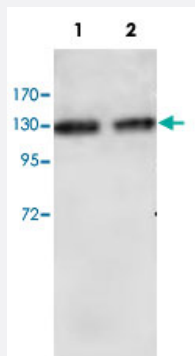


RBBP6 polyclonal antibody

Catalog # PAB18895 Size 100 ug

Applications



Western Blot (Cell lysate)

Western blot analysis of HUVEC cell (Lane 1) and human placenta (Lane 2) lysate with RBBP6 polyclonal antibody (Cat # PAB18895) at 1 : 1000 dilution.

Specification

Product Description	Rabbit polyclonal antibody raised against synthetic peptide of RBBP6.
Immunogen	A synthetic peptide corresponding to amino acids at internal region of human RBBP6.
Host	Rabbit
Reactivity	Human, Mouse, Rat
Form	Liquid
Recommend Usage	ELISA (1:20000-1:80000) Western Blot (1:200-1:1000) The optimal working dilution should be determined by the end user.
Storage Buffer	In buffer containing 0.02% sodium azide
Storage Instruction	Store at 4°C for three months. For long term storage store at -20°C. Aliquot to avoid repeated freezing and thawing.
Note	This product contains sodium azide: a POISONOUS AND HAZARDOUS SUBSTANCE which should be handled by trained staff only.

Applications

- Western Blot (Cell lysate)

Western blot analysis of HUVEC cell (Lane 1) and human placenta (Lane 2) lysate with RBBP6 polyclonal antibody (Cat # PAB18895) at 1 : 1000 dilution.

- Enzyme-linked Immunoabsorbent Assay

Gene Info — RBBP6

Entrez GeneID	5930
Gene Name	RBBP6
Gene Alias	DKFZp686P0638, DKFZp761B2423, MY038, P2P-R, PACT, RBQ-1, SNAMA
Gene Description	retinoblastoma binding protein 6
Omim ID	600938
Gene Ontology	Hyperlink
Gene Summary	The retinoblastoma tumor suppressor (pRB) protein binds with many other proteins. In various human cancers, pRB suppresses cellular proliferation and is inactivated. Cell cycle-dependent phosphorylation regulates the activity of pRB. This gene encodes a protein which binds to underphosphorylated but not phosphorylated pRB. Multiple alternatively spliced transcript variants that encode different isoforms have been found for this gene. [provided by RefSeq]
Other Designations	RB-binding Q-protein 1 proliferation potential-related protein retinoblastoma-binding protein 6 retinoblastoma-binding protein 6, isoform 3