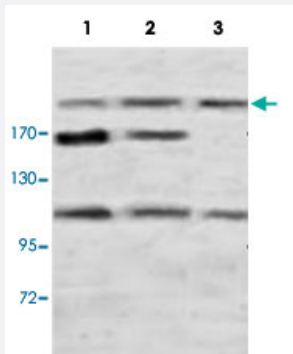


PLXNB1 polyclonal antibody

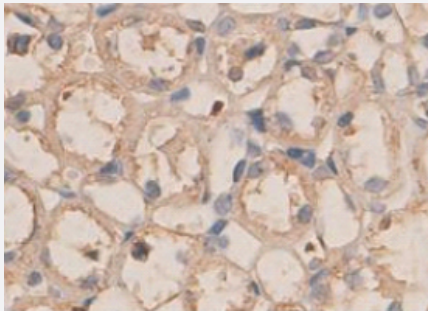
Catalog # PAB18888 Size 100 ug

Applications



Western Blot (Tissue lysate)

Western blot analysis of rat brain (Lane 1), rat testis (Lane 2) and human fetal kidney (Lane 3) lysate with PLXNB1 polyclonal antibody (Cat # PAB18888) at 1 : 500 dilution.



Immunohistochemistry (Formalin/PFA-fixed paraffin-embedded sections)

Immunohistochemical staining of formalin-fixed paraffin-embedded rat kidney tissue with PLXNB1 polyclonal antibody (Cat # PAB18888) at 1 : 100 dilution.

Specification

Product Description	Rabbit polyclonal antibody raised against synthetic peptide of PLXNB1.
Immunogen	A synthetic peptide corresponding to amino acids at N-terminus of human PLXNB1.
Host	Rabbit
Reactivity	Human, Mouse, Rat
Form	Liquid

Recommend Usage	ELISA (1:10000-1:40000) Western Blot (1:200-1:1000) Immunohistochemistry (1:50-1:200) The optimal working dilution should be determined by the end user.
Storage Buffer	In PBS containing 0.02% sodium azide.
Storage Instruction	Store at 4°C for three months. For long term storage store at -20°C. Aliquot to avoid repeated freezing and thawing.
Note	This product contains sodium azide: a POISONOUS AND HAZARDOUS SUBSTANCE which should be handled by trained staff only.

Applications

- Western Blot (Tissue lysate)

Western blot analysis of rat brain (Lane 1), rat testis (Lane 2) and human fetal kidney (Lane 3) lysate with PLXNB1 polyclonal antibody (Cat # PAB18888) at 1 : 500 dilution.

- Immunohistochemistry (Formalin/PFA-fixed paraffin-embedded sections)

Immunohistochemical staining of formalin-fixed paraffin-embedded rat kidney tissue with PLXNB1 polyclonal antibody (Cat # PAB18888) at 1 : 100 dilution.

- Enzyme-linked Immunoabsorbent Assay

Gene Info — PLXNB1

Entrez GeneID	5364
Protein Accession#	NM_002673
Gene Name	PLXNB1
Gene Alias	KIAA0407, MGC149167, PLEXIN-B1, PLXN5, SEP
Gene Description	plexin B1
Omim ID	601053
Gene Ontology	Hyperlink
Other Designations	OTTHUMP00000164806 plexin 5 semaphorin receptor

Pathway

- [Axon guidance](#)

Disease

- [Genetic Predisposition to Disease](#)
- [Schizophrenia](#)