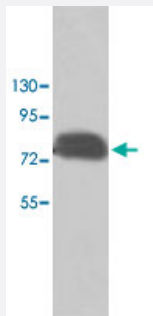


# PAK6 polyclonal antibody

Catalog # PAB18880

Size 100 ug

## Applications



### Western Blot (Tissue lysate)

Western blot analysis of human fetal testis lysate with PAK6 polyclonal antibody (Cat # PAB18880) at 1 : 250 dilution.

## Specification

<b>Product Description</b>	Rabbit polyclonal antibody raised against synthetic peptide of PAK6.
<b>Immunogen</b>	A synthetic peptide corresponding to 15 amino acids at N-terminus of human PAK6.
<b>Host</b>	Rabbit
<b>Reactivity</b>	Human
<b>Form</b>	Liquid
<b>Recommend Usage</b>	ELISA (1:20000) Western Blot (1:100-1:500) The optimal working dilution should be determined by the end user.
<b>Storage Buffer</b>	In buffer containing 0.02% sodium azide
<b>Storage Instruction</b>	Store at 4°C for three months. For long term storage store at -20°C. Aliquot to avoid repeated freezing and thawing.
<b>Note</b>	This product contains sodium azide: a POISONOUS AND HAZARDOUS SUBSTANCE which should be handled by trained staff only.

## Applications

- Western Blot (Tissue lysate)

Western blot analysis of human fetal testis lysate with PAK6 polyclonal antibody (Cat # PAB18880) at 1 : 250 dilution.

- Enzyme-linked Immunoabsorbent Assay

## Gene Info — PAK6

Entrez GeneID [56924](#)

Protein Accession# [NM\\_020168](#)

Gene Name PAK6

Gene Alias PAK5

Gene Description p21 protein (Cdc42/Rac)-activated kinase 6

Omim ID [608110](#)

Gene Ontology [Hyperlink](#)

**Gene Summary**

This gene encodes a member of the p21-activated kinase (PAK) family. The proteins of this family are Rac/Cdc42-associated Ste20-like Ser/Thr protein kinases, characterized by a highly conserved amino-terminal Cdc42/Rac interactive binding (CRIB) domain and a carboxyl-terminal kinase domain. PAK kinases are implicated in the regulation of a number of cellular processes, including cytoskeleton rearrangement, apoptosis and the MAP kinase signaling pathway. The protein encoded by this gene was found to interact with androgen receptor (AR), which is a steroid hormone-dependent transcription factor that is important for male sexual differentiation and development. This gene was found to be highly expressed in testis and prostate tissues and the encoded protein was shown to cotranslocate into the nucleus with AR in response to androgen. Alternatively spliced transcript variants encoding the same protein have been found for this gene. [provided by RefSeq]

**Other Designations** p21(CDKN1A)-activated kinase 6|p21-activated kinase 6|p21-activated protein kinase 6

## Pathway

- [Axon guidance](#)
- [ErbB signaling pathway](#)
- [Focal adhesion](#)
- [Regulation of actin cytoskeleton](#)

- [Renal cell carcinoma](#)
- [T cell receptor signaling pathway](#)

## Disease

- [Adenocarcinoma](#)
- [Esophageal Neoplasms](#)
- [Genetic Predisposition to Disease](#)
- [Kidney Failure](#)
- [Lung Neoplasms](#)
- [Pulmonary Disease](#)
- [Urinary Bladder Neoplasms](#)
- [Werner syndrome](#)