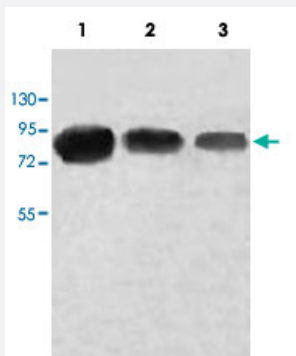


PIWIL4 polyclonal antibody

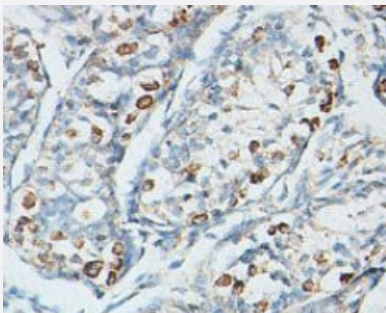
Catalog # PAB18860 Size 100 ug

Applications



Western Blot

Western blot analysis of HepG2 cell (Lane 1), HeLa cell (Lane 2) and human fetal testis (Lane 3) lysate with DTNBP1 polyclonal antibody (Cat # PAB18860) at 1 : 500 dilution.



Immunohistochemistry (Formalin/PFA-fixed paraffin-embedded sections)

Immunohistochemical staining of formalin-fixed paraffin-embedded human testis tissue showing nuclear staining with PIWIL4 polyclonal antibody (Cat # PAB18860) at 1 : 100 dilution.

Specification

Product Description	Rabbit polyclonal antibody raised against partial recombinant PIWIL4.
Immunogen	Recombinant protein corresponding to human PIWIL4.
Host	Rabbit
Reactivity	Human, Mouse, Rat
Form	Liquid

Recommend Usage	ELISA (1:5000-1:20000) Western Blot (1:200-1:1000) Immunohistochemistry (1:50-1:200) The optimal working dilution should be determined by the end user.
Storage Buffer	In buffer containing 0.02% sodium azide
Storage Instruction	Store at 4°C for three months. For long term storage store at -20°C. Aliquot to avoid repeated freezing and thawing.
Note	This product contains sodium azide: a POISONOUS AND HAZARDOUS SUBSTANCE which should be handled by trained staff only.

Applications

- Western Blot

Western blot analysis of HepG2 cell (Lane 1), HeLa cell (Lane 2) and human fetal testis (Lane 3) lysate with DTNBP1 polyclonal antibody (Cat # PAB18860) at 1 : 500 dilution.

- Immunohistochemistry (Formalin/PFA-fixed paraffin-embedded sections)

Immunohistochemical staining of formalin-fixed paraffin-embedded human testis tissue showing nuclear staining with PIWIL4 polyclonal antibody (Cat # PAB18860) at 1 : 100 dilution.

- Enzyme-linked Immunoabsorbent Assay

Gene Info — PIWIL4

Entrez GeneID	143689
Gene Name	PIWIL4
Gene Alias	DKFZp686P01248, FLJ36156, HIWI2, MIWI2
Gene Description	piwi-like 4 (Drosophila)
Omim ID	610315
Gene Ontology	Hyperlink
Gene Summary	PIWIL4 belongs to the Argonaute family of proteins, which function in development and maintenance of germline stem cells (Sasaki et al., 2003 [PubMed 12906857]).[supplied by OMIM]
Other Designations	piwi-like 2 piwi-like 4

Pathway

- [Dorso-ventral axis formation](#)

Disease

- [Lung Neoplasms](#)
- [Tobacco Use Disorder](#)