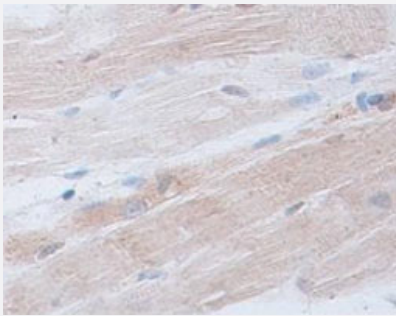


ACTRT2 polyclonal antibody

Catalog # PAB18827 Size 100 ug

Applications



Immunohistochemistry (Formalin/PFA-fixed paraffin-embedded sections)

Immunohistochemical staining of formalin-fixed paraffin-embedded human skeletal muscle tissue showing cytoplasmic staining with ACTRT2 polyclonal antibody (Cat # PAB18827) at 1 : 100 dilution.

Specification

Product Description	Rabbit polyclonal antibody raised against synthetic peptide of ACTRT2.
Immunogen	A synthetic peptide corresponding to amino acids at C-terminus of human ACTRT2.
Host	Rabbit
Reactivity	Human, Mouse, Rat
Form	Liquid
Recommend Usage	ELISA (1:5000-1:20000) Immunohistochemistry (1:50-1:200) The optimal working dilution should be determined by the end user.
Storage Buffer	In buffer containing 0.02% sodium azide
Storage Instruction	Store at 4°C for three months. For long term storage store at -20°C. Aliquot to avoid repeated freezing and thawing.
Note	This product contains sodium azide: a POISONOUS AND HAZARDOUS SUBSTANCE which should be handled by trained staff only.

Applications

- Immunohistochemistry (Formalin/PFA-fixed paraffin-embedded sections)

Immunohistochemical staining of formalin-fixed paraffin-embedded human skeletal muscle tissue showing cytoplasmic staining with ACTRT2 polyclonal antibody (Cat # PAB18827) at 1 : 100 dilution.

- Enzyme-linked Immunoabsorbent Assay

Gene Info — ACTRT2

Entrez GeneID [140625](#)

Protein Accession# [NM_080431](#)

Gene Name ACTRT2

Gene Alias ARPM2, ARPT2, Arp-T2, FLJ25424, HARPM2

Gene Description actin-related protein T2

Omim ID [608535](#)

Gene Ontology [Hyperlink](#)

Gene Summary The protein encoded by this intronless gene belongs to the actin family. Studies have shown that this protein may be involved in cytoskeletal organization similar to other cytoplasmic actin-related protein (ARP) subfamily members. Antibody raised against the human protein has been used to detect the protein by immunoblotting and immunofluorescence microscopy, demonstrating its specific synthesis in the testis, late in spermatid differentiation, and its localization in the calyx. [provided by RefSeq]

Other Designations OTTHUMP00000000569|actin-related protein M2|actin-related protein hArpM2