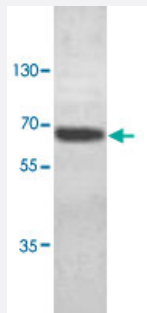


ABCE1 polyclonal antibody

Catalog # PAB18823 Size 100 ug

Applications



Western Blot (Cell lysate)

Western blot analysis of HeLa cell lysate with ABCE1 polyclonal antibody (Cat # PAB18823) at 1 : 1000 dilution.

Specification

Product Description	Rabbit polyclonal antibody raised against synthetic peptide of ABCE1.
Immunogen	A synthetic peptide corresponding to amino acids at C-terminus of human ABCE1.
Host	Rabbit
Reactivity	Human
Form	Liquid
Recommend Usage	ELISA (1:160000) Western Blot (1:1000-1:2000) The optimal working dilution should be determined by the end user.
Storage Buffer	In buffer containing 0.02% sodium azide
Storage Instruction	Store at 4°C for three months. For long term storage store at -20°C. Aliquot to avoid repeated freezing and thawing.
Note	This product contains sodium azide: a POISONOUS AND HAZARDOUS SUBSTANCE which should be handled by trained staff only.

Applications

- Western Blot (Cell lysate)

Western blot analysis of HeLa cell lysate with ABCE1 polyclonal antibody (Cat # PAB18823) at 1 : 1000 dilution.

- Enzyme-linked Immunoabsorbent Assay

Gene Info — ABCE1

Entrez GeneID [6059](#)

Protein Accession# [P61221](#)

Gene Name ABCE1

Gene Alias ABC38, OABP, RLI, RNASEL1, RNASELI, RNS4I

Gene Description ATP-binding cassette, sub-family E (OABP), member 1

Omim ID [601213](#)

Gene Ontology [Hyperlink](#)

Gene Summary The protein encoded by this gene is a member of the superfamily of ATP-binding cassette (ABC) transporters. ABC proteins transport various molecules across extra- and intra-cellular membranes. ABC genes are divided into seven distinct subfamilies (ABC1, MDR/TAP, MRP, ALD, OABP, GCN20, White). This protein is a member of the OABP subfamily. Alternatively referred to as the RNase L inhibitor, this protein functions to block the activity of ribonuclease L. Activation of ribonuclease L leads to inhibition of protein synthesis in the 2-5A/RNase L system, the central pathway for viral interferon action. Two transcript variants encoding the same protein have been found for this gene. [provided by RefSeq]

Other Designations ATP-binding cassette, sub-family E, member 1|RNase L inhibitor|ribonuclease L (2',5'-oligoadenylate synthetase-dependent) inhibitor

Disease

- [Genetic Predisposition to Disease](#)

- [Prostate cancer](#)

- [Prostatic Neoplasms](#)