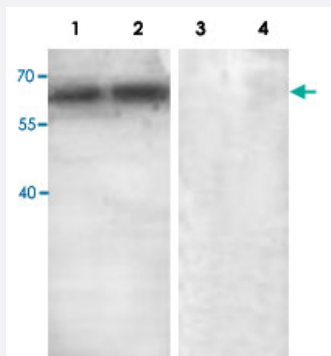


# ABCE1 polyclonal antibody

Catalog # PAB18822      Size 100 ug

## Applications



### Western Blot (Cell lysate)

Western blot analysis with ABCE1 polyclonal antibody (Cat # PAB18822) at 1 : 500 dilution.

Lane 1 : 293 cell, no peptide blocked.

Lane 2 : HeLa cell, no peptide blocked.

Lane 3 : 293 cell, peptide blocked.

Lane 4 : HeLa cell, peptide blocked.

## Specification

<b>Product Description</b>	Rabbit polyclonal antibody raised against synthetic peptide of ABCE1.
<b>Immunogen</b>	A synthetic peptide corresponding to 15 amino acids at C-terminus of human ABCE1.
<b>Host</b>	Rabbit
<b>Reactivity</b>	Human
<b>Form</b>	Liquid
<b>Recommend Usage</b>	ELISA (1:160000) Western Blot (1:500-1:1000) The optimal working dilution should be determined by the end user.
<b>Storage Buffer</b>	In buffer containing 0.02% sodium azide
<b>Storage Instruction</b>	Store at 4°C for three months. For long term storage store at -20°C. Aliquot to avoid repeated freezing and thawing.
<b>Note</b>	This product contains sodium azide: a POISONOUS AND HAZARDOUS SUBSTANCE which should be handled by trained staff only.

## Applications

- Western Blot (Cell lysate)

Western blot analysis with ABCE1 polyclonal antibody (Cat # PAB18822) at 1 : 500 dilution.

Lane 1 : 293 cell, no peptide blocked.

Lane 2 : HeLa cell, no peptide blocked.

Lane 3 : 293 cell, peptide blocked.

Lane 4 : HeLa cell, peptide blocked.

- Enzyme-linked Immunoabsorbent Assay

## Gene Info — ABCE1

Entrez GeneID [6059](#)

Protein Accession# [P61221](#)

Gene Name ABCE1

Gene Alias ABC38, OABP, RLI, RNASEL1, RNASELI, RNS4I

Gene Description ATP-binding cassette, sub-family E (OABP), member 1

Omim ID [601213](#)

Gene Ontology [Hyperlink](#)

**Gene Summary**

The protein encoded by this gene is a member of the superfamily of ATP-binding cassette (ABC) transporters. ABC proteins transport various molecules across extra- and intra-cellular membranes. ABC genes are divided into seven distinct subfamilies (ABC1, MDR/TAP, MRP, ALD, OABP, GCN20, White). This protein is a member of the OABP subfamily. Alternatively referred to as the RNase L inhibitor, this protein functions to block the activity of ribonuclease L. Activation of ribonuclease L leads to inhibition of protein synthesis in the 2-5A/RNase L system, the central pathway for viral interferon action. Two transcript variants encoding the same protein have been found for this gene. [provided by RefSeq]

**Other Designations**

ATP-binding cassette, sub-family E, member 1|RNase L inhibitor|ribonuclease L (2',5'-oligoadenylate synthetase-dependent) inhibitor

## Disease

- [Genetic Predisposition to Disease](#)

- [Prostate cancer](#)

- [Prostatic Neoplasms](#)