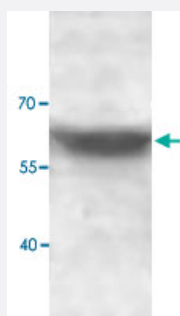


ADAMTSL1 polyclonal antibody

Catalog # PAB18821 Size 100 ug

Applications



Western Blot (Tissue lysate)

Western blot analysis of human fetal skeletal muscle lysate with ADAMTSL1 polyclonal antibody (Cat # PAB18821) at 1 : 200 dilution.

Specification

Product Description	Rabbit polyclonal antibody raised against synthetic peptide of ADAMTSL1.
Immunogen	A synthetic peptide corresponding to amino acids at C-terminus of human ADAMTSL1.
Host	Rabbit
Reactivity	Human
Form	Liquid
Purification	Protein A purification
Recommend Usage	ELISA (1:160000) Western Blot (1:1000-1:2000) The optimal working dilution should be determined by the end user.
Storage Buffer	In buffer containing 0.02% sodium azide
Storage Instruction	Store at 4°C for three months. For long term storage store at -20°C. Aliquot to avoid repeated freezing and thawing.
Note	This product contains sodium azide: a POISONOUS AND HAZARDOUS SUBSTANCE which should be handled by trained staff only.

Applications

- Western Blot (Tissue lysate)

Western blot analysis of human fetal skeletal muscle lysate with ADAMTSL1 polyclonal antibody (Cat # PAB18821) at 1 : 200 dilution.

- Enzyme-linked Immunoabsorbent Assay

Gene Info — ADAMTSL1

Entrez GeneID	92949
Gene Name	ADAMTSL1
Gene Alias	ADAMTSR1, C9orf94, DKFZp686L03130, FLJ35283, FLJ41032, FLJ46891, MGC118803, MGC118805, MGC40193, PUNCTIN
Gene Description	ADAMTS-like 1
Omim ID	609198
Gene Ontology	Hyperlink
Gene Summary	This gene encodes a secreted protein and member of the ADAMTS (a disintegrin and metalloproteinase with thrombospondin motif) family. This protein lacks the metalloproteinase and disintegrin-like domains, which are typical of the ADAMTS family, but contains other ADAMTS domains, including the thrombospondin type 1 motif. This protein may have important functions in the extracellular matrix. Alternative splicing results in multiple transcript variants encoding distinct proteins. [provided by RefSeq]
Other Designations	ADAM-TS related protein 1 OTTHUMP00000021085 OTTHUMP00000045125

Disease

- [Asthma](#)
- [Cardiovascular Diseases](#)
- [Diabetes Mellitus](#)
- [Edema](#)
- [Genetic Predisposition to Disease](#)

- [Hypersensitivity](#)
- [Tobacco Use Disorder](#)