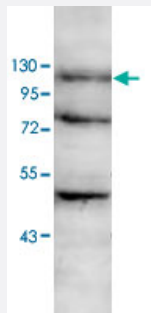


# EPHA4 polyclonal antibody

Catalog # PAB18809

Size

## Applications



### Western Blot (Cell lysate)

Western blot analysis of SW-620 cell lysate with EPHA4 polyclonal antibody (Cat # PAB18809) at 1 : 200 dilution.

## Specification

<b>Product Description</b>	Rabbit polyclonal antibody raised against synthetic peptide of EPHA4.
<b>Immunogen</b>	A synthetic peptide corresponding to amino acids 890-904 of human EPHA4.
<b>Host</b>	Rabbit
<b>Reactivity</b>	Human, Mouse, Rat
<b>Form</b>	Liquid
<b>Purification</b>	Protein A purification
<b>Recommend Usage</b>	ELISA (1:1000-1:10000) Western Blot (1:200-1:1000) The optimal working dilution should be determined by the end user.
<b>Storage Buffer</b>	In buffer containing 0.02% sodium azide
<b>Storage Instruction</b>	Store at 4°C for three months. For long term storage store at -20°C. Aliquot to avoid repeated freezing and thawing.
<b>Note</b>	This product contains sodium azide: a POISONOUS AND HAZARDOUS SUBSTANCE which should be handled by trained staff only.

## Applications

- Western Blot (Cell lysate)

Western blot analysis of SW-620 cell lysate with EPHA4 polyclonal antibody (Cat # PAB18809) at 1 : 200 dilution.

- Enzyme-linked Immunoabsorbent Assay

## Gene Info — EPHA4

Entrez GeneID	<a href="#">2043</a>
Gene Name	EPHA4
Gene Alias	HEK8, SEK, TYRO1
Gene Description	EPH receptor A4
Omim ID	<a href="#">602188</a>
Gene Ontology	<a href="#">Hyperlink</a>
Gene Summary	This gene belongs to the ephrin receptor subfamily of the protein-tyrosine kinase family. EPH and EPH-related receptors have been implicated in mediating developmental events, particularly in the nervous system. Receptors in the EPH subfamily typically have a single kinase domain and an extracellular region containing a Cys-rich domain and 2 fibronectin type III repeats. The ephrin receptors are divided into 2 groups based on the similarity of their extracellular domain sequences and their affinities for binding ephrin-A and ephrin-B ligands. [provided by RefSeq]
Other Designations	OTTHUMP00000164185 TYRO1 protein tyrosine kinase ephrin receptor EphA4 ephrin type-A receptor 4 receptor protein-tyrosine kinase HEK8 tyrosine-protein kinase receptor SEK

## Pathway

- [Axon guidance](#)

## Disease

- [Alzheimer Disease](#)
- [Cognition Disorders](#)

- [Genetic Predisposition to Disease](#)
- [Parkinson disease](#)