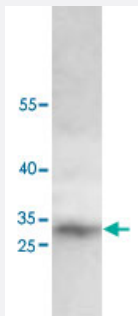


CNN1 polyclonal antibody

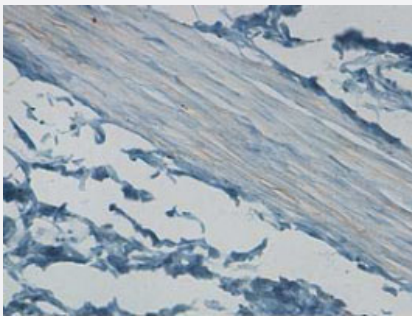
Catalog # PAB18808 Size 100 ug

Applications



Western Blot (Tissue lysate)

Western blot analysis of human fetal stomach lysate with CNN1 polyclonal antibody (Cat # PAB18808) at 1 : 1000 dilution.



Immunohistochemistry (Formalin/PFA-fixed paraffin-embedded sections)

Immunohistochemical staining of formalin-fixed paraffin-embedded human stomach tissue showing cytoplasmic staining with CNN1 polyclonal antibody (Cat # PAB18808) at 1 : 100 dilution.

Specification

Product Description	Rabbit polyclonal antibody raised against synthetic peptide of CNN1.
Immunogen	A synthetic peptide corresponding to amino acids 150-250 of human CNN1.
Host	Rabbit
Reactivity	Human
Form	Liquid
Purification	Peptide affinity purification

Recommend Usage	ELISA (1:1000-1:10000) Western Blot (1:500-1:1000) Immunohistochemistry (1:50-1:500) The optimal working dilution should be determined by the end user.
Storage Buffer	In buffer containing 0.02% sodium azide
Storage Instruction	Store at 4°C for three months. For long term storage store at -20°C. Aliquot to avoid repeated freezing and thawing.
Note	This product contains sodium azide: a POISONOUS AND HAZARDOUS SUBSTANCE which should be handled by trained staff only.

Applications

- Western Blot (Tissue lysate)

Western blot analysis of human fetal stomach lysate with CNN1 polyclonal antibody (Cat # PAB18808) at 1 : 1000 dilution.

- Immunohistochemistry (Formalin/PFA-fixed paraffin-embedded sections)

Immunohistochemical staining of formalin-fixed paraffin-embedded human stomach tissue showing cytoplasmic staining with CNN1 polyclonal antibody (Cat # PAB18808) at 1 : 100 dilution.

- Enzyme-linked Immunoabsorbent Assay

Gene Info — CNN1

Entrez GeneID	1264
Gene Name	CNN1
Gene Alias	SMCC, Sm-Calp
Gene Description	calponin 1, basic, smooth muscle
Omim ID	600806
Gene Ontology	Hyperlink
Gene Summary	basic
Other Designations	calponins, basic

Disease

- [Cardiovascular Diseases](#)
- [Diabetes Mellitus](#)
- [Edema](#)