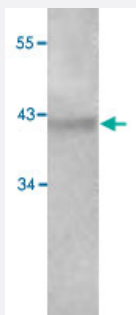


CNTFR polyclonal antibody

Catalog # PAB18804

Size 100 ug

Applications



Western Blot (Tissue lysate)

Western blot analysis of human fetal brain lysate with CNTFR polyclonal antibody (Cat # PAB18804) at 1 : 200 dilution.

Specification

Product Description	Rabbit polyclonal antibody raised against synthetic peptide of CNTFR.
Immunogen	A synthetic peptide corresponding to 14 amino acids at internal region of human CNTFR.
Host	Rabbit
Reactivity	Human
Form	Liquid
Recommend Usage	ELISA (1:8000-1:30000) Western Blot (1:200-1:500) The optimal working dilution should be determined by the end user.
Storage Buffer	In buffer containing 0.02% sodium azide
Storage Instruction	Store at 4°C for three months. For long term storage store at -20°C. Aliquot to avoid repeated freezing and thawing.
Note	This product contains sodium azide: a POISONOUS AND HAZARDOUS SUBSTANCE which should be handled by trained staff only.

Applications

- Western Blot (Tissue lysate)

Western blot analysis of human fetal brain lysate with CNTFR polyclonal antibody (Cat # PAB18804) at 1 : 200 dilution.

- Enzyme-linked Immunoabsorbent Assay

Gene Info — CNTFR

Entrez GeneID [1271](#)

Protein Accession# [P26992](#)

Gene Name CNTFR

Gene Alias MGC1774

Gene Description ciliary neurotrophic factor receptor

Omim ID [118946](#)

Gene Ontology [Hyperlink](#)

Gene Summary This gene encodes a hematopoietin/interferon-class receptor belonging to the cytokine superfamily of receptors. The encoded gene product represents the CNTF-specific alpha subunit of a heterotrimer forming the CNTF receptor complex, which also includes LIFR and gp130. The receptor is attached to the membrane by a glycosyl-phosphatidylinositol linkage and contains an immunoglobulin-like C2-type domain and a fibronectin type-III domain. Signal transduction requires that CNTF bind first to this alpha component, which permits the recruitment of gp130 and LIFR beta to form the tripartite receptor complex. Signal transduction stimulates gene expression, cell survival or differentiation in a variety of neuronal cell types. Alternative splicing has been observed at this locus and two variants, both encoding the same protein, have been identified. [provided by RefSeq]

Other Designations CNTFR alpha|OTTHUMP00000021270|OTTHUMP00000021271|ciliary neurotrophic factor receptor alpha

Pathway

- [Cytokine-cytokine receptor interaction](#)
- [Jak-STAT signaling pathway](#)

Disease

- [Alzheimer disease](#)
- [Cerebral Amyloid Angiopathy](#)
- [Disease Models](#)
- [Eating Disorders](#)
- [Genetic Predisposition to Disease](#)
- [Mental Disorders](#)
- [Neuroblastoma](#)
- [Tobacco Use Disorder](#)