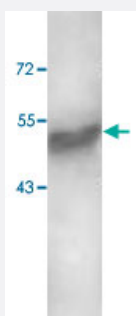


# SMPDL3B polyclonal antibody

Catalog # PAB18796

Size 100 ug

## Applications



### Western Blot (Tissue lysate)

Western blot analysis of human fetal intestine lysate with SMPDL3B polyclonal antibody (Cat # PAB18796) at 1 : 200 dilution.

## Specification

<b>Product Description</b>	Rabbit polyclonal antibody raised against synthetic peptide of SMPDL3B.
<b>Immunogen</b>	A synthetic peptide corresponding to 15 amino acids at internal region of human SMPDL3B.
<b>Host</b>	Rabbit
<b>Reactivity</b>	Human
<b>Form</b>	Liquid
<b>Recommend Usage</b>	ELISA (1:10000-1:40000) Western Blot (1:200-1:500) The optimal working dilution should be determined by the end user.
<b>Storage Buffer</b>	In buffer containing 0.02% sodium azide
<b>Storage Instruction</b>	Store at 4°C for three months. For long term storage store at -20°C. Aliquot to avoid repeated freezing and thawing.
<b>Note</b>	This product contains sodium azide: a POISONOUS AND HAZARDOUS SUBSTANCE which should be handled by trained staff only.

## Applications

- Western Blot (Tissue lysate)

Western blot analysis of human fetal intestine lysate with SMPDL3B polyclonal antibody (Cat # PAB18796) at 1 : 200 dilution.

- Enzyme-linked Immunoabsorbent Assay

## Gene Info — SMPDL3B

Entrez GeneID	<a href="#">27293</a>
Protein Accession#	<a href="#">Q92485</a>
Gene Name	SMPDL3B
Gene Alias	ASML3B
Gene Description	sphingomyelin phosphodiesterase, acid-like 3B
Gene Ontology	<a href="#">Hyperlink</a>
Gene Summary	O
Other Designations	OTTHUMP00000004004 OTTHUMP00000004005 acid sphingomyelinase-like phosphodiesterase acid sphingomyelinase-like phosphodiesterase 3B