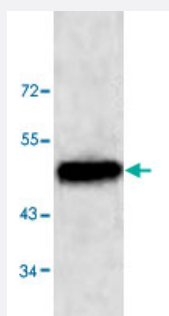


NUCB1 polyclonal antibody

Catalog # PAB18795 Size 200 uL

Applications



Western Blot (Cell lysate)

Western blot analysis of HeLa cell lysate with NUCB1 polyclonal antibody (Cat # PAB18795) at 1 : 500 dilution.

Specification

Product Description	Rabbit polyclonal antibody raised against synthetic peptide of NUCB1.
Immunogen	A synthetic peptide corresponding to 15 amino acids at C-terminus of human NUCB1.
Host	Rabbit
Reactivity	Human
Form	Lyophilized
Purification	Protein A purification
Recommend Usage	ELISA (1:10000-1:40000) Western Blot (1:200-1:1000) The optimal working dilution should be determined by the end user.
Storage Buffer	In buffer containing 0.02% sodium azide
Storage Instruction	Store at 4°C for three months. For long term storage store at -20°C. Aliquot to avoid repeated freezing and thawing.
Note	This product contains sodium azide: a POISONOUS AND HAZARDOUS SUBSTANCE which should be handled by trained staff only.

Applications

- Western Blot (Cell lysate)

Western blot analysis of HeLa cell lysate with NUCB1 polyclonal antibody (Cat # PAB18795) at 1 : 500 dilution.

- Enzyme-linked Immunoabsorbent Assay

Gene Info — NUCB1

Entrez GeneID	4924
Gene Name	NUCB1
Gene Alias	DKFZp686A15286, FLJ40471, NUC
Gene Description	nucleobindin 1
Omim ID	601323
Gene Ontology	Hyperlink
Other Designations	-