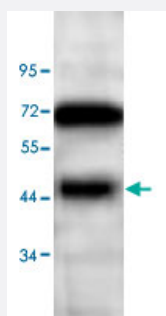


SMARCB1 polyclonal antibody

Catalog # PAB18784 Size 100 ug

Applications



Western Blot (Tissue lysate)

Western blot analysis of hman thymus lysate with SMARCB1 polyclonal antibody (Cat # PAB18784) at 1 : 200 dilution.

Specification

Product Description	Rabbit polyclonal antibody raised against synthetic peptide of SMARCB1.
Immunogen	A synthetic peptide corresponding to 14 amino acids at N-terminus of human SMARCB1.
Host	Rabbit
Reactivity	Human
Form	Liquid
Purification	Protein A/G column
Recommend Usage	ELISA (1:80000) Western Blot (1:200-1:1000) The optimal working dilution should be determined by the end user.
Storage Buffer	In buffer containing 0.02% sodium azide
Storage Instruction	Store at 4°C for three months. For long term storage store at -20°C. Aliquot to avoid repeated freezing and thawing.
Note	This product contains sodium azide: a POISONOUS AND HAZARDOUS SUBSTANCE which should be handled by trained staff only.

Applications

- Western Blot (Tissue lysate)

Western blot analysis of hman thymus lysate with SMARCB1 polyclonal antibody (Cat # PAB18784) at 1 : 200 dilution.

- Enzyme-linked Immunoabsorbent Assay

Gene Info — SMARCB1

Entrez GeneID	6598
Gene Name	SMARCB1
Gene Alias	BAF47, INI1, RDT, SNF5, SNF5L1, Sfh1p, Snr1, hSNFS
Gene Description	SWI/SNF related, matrix associated, actin dependent regulator of chromatin, subfamily b, member 1
Omim ID	601607
Gene Ontology	Hyperlink
Gene Summary	The protein encoded by this gene is part of a complex that relieves repressive chromatin structures, allowing the transcriptional machinery to access its targets more effectively. The encoded nuclear protein may also bind to and enhance the DNA joining activity of HIV-1 integrase. This gene has been found to be a tumor suppressor, and mutations in it have been associated with malignant rhabdoid tumors. Two transcript variants encoding different isoforms have been found for this gene. [provided by RefSeq]
Other Designations	integrase interactor 1 malignant rhabdoid tumor suppressor sucrose nonfermenting, yeast, homolog-like 1

Disease

- [Asthma](#)
- [Cardiovascular Diseases](#)
- [Diabetes Mellitus](#)
- [Edema](#)
- [Genetic Predisposition to Disease](#)

- [Meningeal Neoplasms](#)
- [Meningioma](#)
- [Pancreatic cancer](#)
- [Pancreatic Neoplasms](#)
- [Rhabdoid Tumor](#)