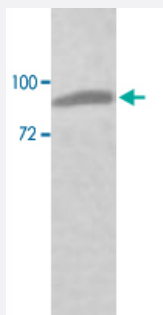


PARP9 polyclonal antibody

Catalog # PAB18775 Size 100 ug

Applications



Western Blot (Cell lysate)

Western blot analysis of HepG2 cell lysate with PARP9 polyclonal antibody (Cat # PAB18775) at 1 : 500 dilution.

Specification

Product Description	Rabbit polyclonal antibody raised against synthetic peptide of PARP9.
Immunogen	A synthetic peptide corresponding to 14 amino acids at C-terminus of human PARP9.
Host	Rabbit
Reactivity	Human
Form	Liquid
Recommend Usage	ELISA (1:20000-1:80000) Western Blot (1:200-1:1000) The optimal working dilution should be determined by the end user.
Storage Buffer	In buffer containing 0.02% sodium azide
Storage Instruction	Store at 4°C for three months. For long term storage store at -20°C. Aliquot to avoid repeated freezing and thawing.
Note	This product contains sodium azide: a POISONOUS AND HAZARDOUS SUBSTANCE which should be handled by trained staff only.

Applications

- Western Blot (Cell lysate)

Western blot analysis of HepG2 cell lysate with PARP9 polyclonal antibody (Cat # PAB18775) at 1 : 500 dilution.

- Enzyme-linked Immunoabsorbent Assay

Gene Info — PARP9

Entrez GeneID	83666
---------------	-----------------------

Protein Accession#	Q8IXQ6
--------------------	------------------------

Gene Name	PARP9
-----------	-------

Gene Alias	BAL, BAL1, DKFZp666B0810, DKFZp686M15238, FLJ26637, FLJ41418, MGC:7868
------------	--

Gene Description	poly (ADP-ribose) polymerase family, member 9
------------------	---

Gene Ontology	Hyperlink
---------------	---------------------------

Gene Summary	O
--------------	---

Other Designations	B aggressive lymphoma
--------------------	-----------------------