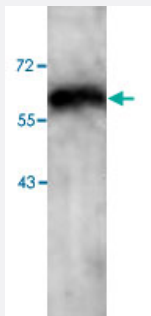


PARP3 polyclonal antibody

Catalog # PAB18772 Size 100 ug

Applications



Western Blot (Cell lysate)

Western blot analysis of HepG2 cell lysate with PARP3 polyclonal antibody (Cat # PAB18772) at 1 : 250 dilution.

Specification

Product Description	Rabbit polyclonal antibody raised against synthetic peptide of PARP3.
Immunogen	A synthetic peptide corresponding to 14 amino acids at internal region of human PARP3.
Host	Rabbit
Reactivity	Human
Form	Liquid
Recommend Usage	ELISA (1:20000-1:80000) Western Blot (1:200-1:500) The optimal working dilution should be determined by the end user.
Storage Buffer	In buffer containing 0.02% sodium azide
Storage Instruction	Store at 4°C for three months. For long term storage store at -20°C. Aliquot to avoid repeated freezing and thawing.
Note	This product contains sodium azide: a POISONOUS AND HAZARDOUS SUBSTANCE which should be handled by trained staff only.

Applications

- Western Blot (Cell lysate)

Western blot analysis of HepG2 cell lysate with PARP3 polyclonal antibody (Cat # PAB18772) at 1 : 250 dilution.

- Enzyme-linked Immunoabsorbent Assay

Gene Info — PARP3

Entrez GeneID [10039](#)

Protein Accession# [NM_005485](#)

Gene Name PARP3

Gene Alias ADPRT3, ADPRTL2, ADPRTL3, IRT1, hPARP-3, pADPRT-3

Gene Description poly (ADP-ribose) polymerase family, member 3

Omim ID [607726](#)

Gene Ontology [Hyperlink](#)

Gene Summary The protein encoded by this gene belongs to the PARP family. These enzymes modify nuclear proteins by poly-ADP-ribosylation, which is required for DNA repair, regulation of apoptosis, and maintenance of genomic stability. This gene encodes the poly(ADP-ribosyl)transferase 3, which is preferentially localized to the daughter centriole throughout the cell cycle. Alternatively spliced transcript variants encoding different isoforms have been identified. [provided by RefSeq]

Other Designations ADP-ribosyltransferase (NAD⁺; poly (ADP-ribose) polymerase)-like 2|ADP-ribosyltransferase (NAD⁺; poly (ADP-ribose) polymerase)-like 3|NAD⁺ ADP-ribosyltransferase 3|poly(ADP-ribose) polymerase 3|poly(ADP-ribose) synthetase-3

Pathway

- [Base excision repair](#)

Disease

- [Cardiovascular Diseases](#)
- [Diabetes Mellitus](#)

- [DNA Damage](#)
- [Edema](#)
- [Genetic Predisposition to Disease](#)
- [Kidney Failure](#)
- [Urinary Bladder Neoplasms](#)