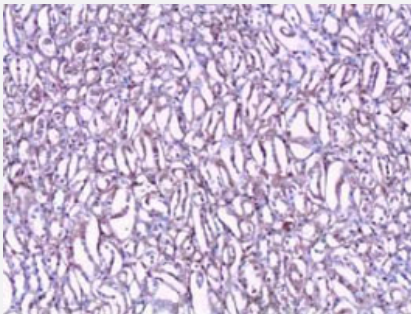


# CLIC1 polyclonal antibody

Catalog # PAB18767

Size 100 ug

## Applications



### Immunohistochemistry (Formalin/PFA-fixed paraffin-embedded sections)

Immunohistochemical staining of formalin-fixed paraffin-embedded human kidney tissue showing nuclear and cytoplasmic staining with CLIC1 polyclonal antibody (Cat # PAB18767) at 1 : 100 dilution.

## Specification

<b>Product Description</b>	Rabbit polyclonal antibody raised against synthetic peptide of CLIC1.
<b>Immunogen</b>	A synthetic peptide corresponding to 14 amino acids at N-terminus of human CLIC1.
<b>Host</b>	Rabbit
<b>Reactivity</b>	Human
<b>Form</b>	Liquid
<b>Recommend Usage</b>	ELISA (1:20000-1:80000) Western Blot (1:200-1:500) Immunohistochemistry (1:50-1:250) The optimal working dilution should be determined by the end user.
<b>Storage Buffer</b>	In buffer containing 0.02% sodium azide
<b>Storage Instruction</b>	Store at 4°C for three months. For long term storage store at -20°C. Aliquot to avoid repeated freezing and thawing.
<b>Note</b>	This product contains sodium azide: a POISONOUS AND HAZARDOUS SUBSTANCE which should be handled by trained staff only.

## Applications

- Western Blot
- Immunohistochemistry (Formalin/PFA-fixed paraffin-embedded sections)

Immunohistochemical staining of formalin-fixed paraffin-embedded human kidney tissue showing nuclear and cytoplasmic staining with CLIC1 polyclonal antibody (Cat # PAB18767) at 1 : 100 dilution.

- Enzyme-linked Immunoabsorbent Assay

## Gene Info — CLIC1

Entrez GeneID [1192](#)

Protein Accession# [NM\\_001288](#)

Gene Name CLIC1

Gene Alias G6, NCC27

Gene Description chloride intracellular channel 1

Omim ID [602872](#)

Gene Ontology [Hyperlink](#)

**Gene Summary** Chloride channels are a diverse group of proteins that regulate fundamental cellular processes including stabilization of cell membrane potential, transepithelial transport, maintenance of intracellular pH, and regulation of cell volume. Chloride intracellular channel 1 is a member of the p64 family ; the protein localizes principally to the cell nucleus and exhibits both nuclear and plasma membrane chloride ion channel activity. [provided by RefSeq]

**Other Designations** OTTHUMP00000029131|OTTHUMP00000029133|OTTHUMP00000029137|OTTHUMP00000174486|RNCC protein|chloride channel ABP|nuclear chloride ion channel protein|p64CLCP

## Disease

- [Abortion](#)
- [Cardiovascular Diseases](#)
- [Colitis](#)
- [Diabetes Mellitus](#)

- [Edema](#)
- [Genetic Predisposition to Disease](#)
- [Lupus Erythematosus](#)
- [Obesity](#)