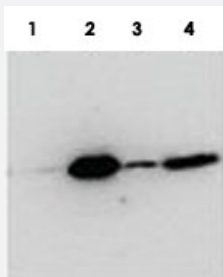


BICC1 polyclonal antibody

Catalog # PAB18761 Size 100 ug

Applications

Western Blot (Transfected lysate)



HEK293 overexpressing human BICC1 with N-terminal FLAG, probed with rabbit anti-BCC1 in Western Blot after IP using either BICC1 polyclonal antibody (Cat # PAB18761) or anti-FLAG antibody in the presence or absence of SDS.

Lane 1: native, PAB18761.

Lane 2: native, anti-Flag.

Lane 3: SDS, PAB18761.

Lane 4: SDS, anti-Flag.

Specification

Product Description	Goat polyclonal antibody raised against synthetic peptide of BICC1.
Immunogen	A synthetic peptide corresponding to internal region of human BICC1.
Sequence	C-PNPSIQHISQT
Host	Goat
Reactivity	Human
Form	Liquid
Purification	Antigen affinity purification
Concentration	0.5 mg/mL
Recommend Usage	ELISA (1:8000) Western Blot (1ug/mL) The optimal working dilution should be determined by the end user.

Storage Buffer	In Tris saline, pH 7.3 (0.02% sodium azide, 0.5% BSA)
Storage Instruction	Store at -20°C. Aliquot to avoid repeated freezing and thawing.
Note	This product contains sodium azide: a POISONOUS AND HAZARDOUS SUBSTANCE which should be handled by trained staff only.

Applications

- Western Blot (Transfected lysate)

HEK293 overexpressing human BICC1 with N-terminal FLAG, probed with rabbit anti-BICC1 in Western Blot after IP using either BICC1 polyclonal antibody (Cat # PAB18761) or anti-FLAG antibody in the presence or absence of SDS.

Lane 1: native, PAB18761.

Lane 2: native, anti-Flag.

Lane 3: SDS, PAB18761.

Lane 4: SDS, anti-Flag.

- Immunoprecipitation

- Enzyme-linked Immunoabsorbent Assay

Gene Info — BICC1

Entrez GeneID	80114
Protein Accession#	NP_001073981.1
Gene Name	BICC1
Gene Alias	-
Gene Description	bicaudal C homolog 1 (Drosophila)
Gene Ontology	Hyperlink
Gene Summary	This gene encodes an RNA-binding protein that is active in regulating gene expression by modulating protein translation during embryonic development. Mouse studies identified the corresponding protein to be under strict control during cell differentiation and to be a maternally provided gene product. [provided by RefSeq]
Other Designations	OTTHUMP00000019636 bicaudal C homolog 1

Disease

- [Alzheimer disease](#)
- [Depressive Disorder](#)
- [Genetic Predisposition to Disease](#)
- [Recurrence](#)
- [Tobacco Use Disorder](#)