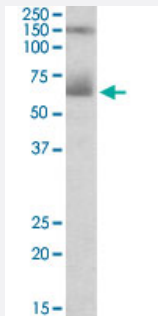


MSLN polyclonal antibody

Catalog # PAB18754 Size 100 ug

Applications



Western Blot (Tissue lysate)

MSLN polyclonal antibody (Cat # PAB18754) (0.3 ug/mL) staining of human placenta lysate (35 ug protein in RIPA buffer). Primary incubation was 1 hour. Detected by chemiluminescence.

Specification

Product Description	Goat polyclonal antibody raised against synthetic peptide of MSLN.
Immunogen	A synthetic peptide corresponding to amino acids at internal region of human MSLN.
Sequence	CPSGKKAREIDES
Host	Goat
Theoretical MW (kDa)	70
Reactivity	Human
Specificity	This antibody is expected to recognize isoform 1 and 2 (NP_005814.2; NP_037536.2).
Form	Liquid
Purification	Antigen affinity purification
Concentration	0.5 mg/mL
Recommend Usage	ELISA (1:64000) Western Blot (0.3-1 ug/mL) The optimal working dilution should be determined by the end user.

Storage Buffer	In Tris saline, pH 7.3 (0.02% sodium azide, 0.5% BSA)
Storage Instruction	Store at -20°C. Aliquot to avoid repeated freezing and thawing.
Note	This product contains sodium azide: a POISONOUS AND HAZARDOUS SUBSTANCE which should be handled by trained staff only.

Applications

- Western Blot (Tissue lysate)

MSLN polyclonal antibody (Cat # PAB18754) (0.3 ug/mL) staining of human placenta lysate (35 ug protein in RIPA buffer). Primary incubation was 1 hour. Detected by chemiluminescence.

- Enzyme-linked Immunoabsorbent Assay

Gene Info — MSLN

Entrez GeneID	10232
Protein Accession#	NP_005814.2;NP_037536.2
Gene Name	MSLN
Gene Alias	CAK1, MPF, SMR
Gene Description	mesothelin
Omim ID	601051
Gene Ontology	Hyperlink
Gene Summary	An antibody that reacts with ovarian cancers and mesotheliomas was used to isolate a cell surface antigen named mesothelin. Although the function of mesothelin is unknown, it may play a role in cellular adhesion and is present on mesothelium, mesotheliomas, and ovarian cancers. This gene encodes a preproprotein that is cleaved into two products, megakaryocyte potentiating factor and mesothelin. Alternative splicing results in multiple transcript variants. [provided by RefSeq]
Other Designations	megakaryocyte potentiating factor

Disease

- [Adenocarcinoma](#)

- [Asbestosis](#)
- [Esophageal Neoplasms](#)
- [Mesothelioma](#)
- [Occupational Diseases](#)
- [Pleural Neoplasms](#)