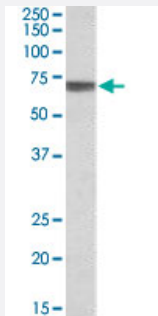


# TGFBI polyclonal antibody

Catalog # PAB18750      Size 100 ug

## Applications



### Western Blot (Tissue lysate)

TGFBI polyclonal antibody (Cat # PAB18750) (0.3 ug/mL) staining of human kidney lysate (35 ug protein in RIPA buffer). Primary incubation was 1 hour. Detected by chemiluminescence.



### Immunohistochemistry (Formalin/PFA-fixed paraffin-embedded sections)

TGFBI polyclonal antibody (Cat # PAB18750) (3.8 ug/mL) staining of paraffin embedded human kidney. Steamed antigen retrieval with citrate buffer pH 6, AP-staining.

## Specification

<b>Product Description</b>	Goat polyclonal antibody raised against synthetic peptide of TGFBI.
<b>Immunogen</b>	A synthetic peptide corresponding to internal region of human TGFBI.
<b>Sequence</b>	C-QLYTDRTTEKLRPE
<b>Host</b>	Goat
<b>Theoretical MW (kDa)</b>	70
<b>Reactivity</b>	Human
<b>Form</b>	Liquid

<b>Purification</b>	Antigen affinity purification
<b>Concentration</b>	0.5 mg/mL
<b>Recommend Usage</b>	ELISA (1:32000) Western Blot (0.2-0.5 ug/mL) Immunohistochemistry (Formalin/PFA-fixed paraffin-embedded sections) (4-6 ug/mL) The optimal working dilution should be determined by the end user.
<b>Storage Buffer</b>	In Tris saline, pH 7.3 (0.02% sodium azide, 0.5% BSA)
<b>Storage Instruction</b>	Store at -20°C. Aliquot to avoid repeated freezing and thawing.
<b>Note</b>	This product contains sodium azide: a POISONOUS AND HAZARDOUS SUBSTANCE which should be handled by trained staff only.

## Applications

- Western Blot (Tissue lysate)

TGFBI polyclonal antibody (Cat # PAB18750) (0.3 ug/mL) staining of human kidney lysate (35 ug protein in RIPA buffer). Primary incubation was 1 hour. Detected by chemiluminescence.

- Immunohistochemistry (Formalin/PFA-fixed paraffin-embedded sections)

TGFBI polyclonal antibody (Cat # PAB18750) (3.8 ug/mL) staining of paraffin embedded human kidney. Steamed antigen retrieval with citrate buffer pH 6, AP-staining.

- Enzyme-linked Immunoabsorbent Assay

## Gene Info — TGFBI

<b>Entrez GeneID</b>	<a href="#">7045</a>
<b>Protein Accession#</b>	<a href="#">NP_000349.1</a>
<b>Gene Name</b>	TGFBI
<b>Gene Alias</b>	BIGH3, CDB1, CDG2, CDGG1, CSD, CSD1, CSD2, CSD3, EBMD, LCD1
<b>Gene Description</b>	transforming growth factor, beta-induced, 68kDa
<b>Omim ID</b>	<a href="#">121820</a> <a href="#">121900</a> <a href="#">122200</a> <a href="#">601692</a> <a href="#">602082</a> <a href="#">607541</a> <a href="#">608470</a> <a href="#">608471</a>
<b>Gene Ontology</b>	<a href="#">Hyperlink</a>

**Gene Summary**

This gene encodes an RGD-containing protein that binds to type I, II and IV collagens. The RGD motif is found in many extracellular matrix proteins modulating cell adhesion and serves as a ligand recognition sequence for several integrins. This protein plays a role in cell-collagen interactions and may be involved in endochondrial bone formation in cartilage. The protein is induced by transforming growth factor-beta and acts to inhibit cell adhesion. Mutations in this gene are associated with multiple types of corneal dystrophy. [provided by RefSeq]

**Other Designations**

RGD-containing collagen-associated protein|kerato-epithelin

**Disease**

- [Cardiovascular Diseases](#)
- [Corneal Dystrophies](#)
- [Diabetes Mellitus](#)
- [Edema](#)
- [Genetic Predisposition to Disease](#)