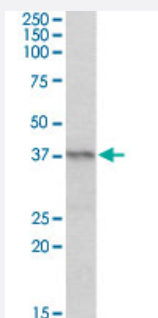


PAX4 polyclonal antibody

Catalog # PAB18747 Size 100 ug

Applications



Western Blot (Tissue lysate)

PAX4 polyclonal antibody (Cat # PAB18747) (0.2 ug/mL) staining of mouse pancreas lysate (35 ug protein in RIPA buffer). Primary incubation was 1 hour. Detected by chemiluminescence.

Specification

Product Description	Goat polyclonal antibody raised against synthetic peptide of PAX4.
Immunogen	A synthetic peptide corresponding to amino acids at internal region of human PAX4.
Sequence	C-GKLATATSLPEDTVR
Host	Goat
Theoretical MW (kDa)	37
Reactivity	Human, Mouse
Form	Liquid
Purification	Antigen affinity purification
Concentration	0.5 mg/mL
Recommend Usage	ELISA (1:64000) Western Blot (0.2-0.6 ug/mL) The optimal working dilution should be determined by the end user.
Storage Buffer	In Tris saline, pH 7.3 (0.02% sodium azide, 0.5% BSA)

Storage Instruction

Store at -20°C.
Aliquot to avoid repeated freezing and thawing.

Note

This product contains sodium azide: a POISONOUS AND HAZARDOUS SUBSTANCE which should be handled by trained staff only.

Applications

- Western Blot (Tissue lysate)

PAX4 polyclonal antibody (Cat # PAB18747) (0.2 ug/mL) staining of mouse pancreas lysate (35 ug protein in RIPA buffer). Primary incubation was 1 hour. Detected by chemiluminescence.

- Enzyme-linked Immunoabsorbent Assay

Gene Info — PAX4

Entrez GeneID[5078](#)**Protein Accession#**[NP_006184.2](#)**Gene Name**

PAX4

Gene Alias

KPD, MGC129960, MODY9

Gene Description

paired box 4

Omim ID[167413](#)**Gene Ontology**[Hyperlink](#)**Gene Summary**

This gene is a member of the paired box (PAX) family of transcription factors. Members of this gene family typically contain a paired box domain, an octapeptide, and a paired-type homeodomain. These genes play critical roles during fetal development and cancer growth. The paired box 4 gene is involved in pancreatic islet development and mouse studies have demonstrated a role for this gene in differentiation of insulin-producing beta cells. [provided by RefSeq]

Other Designations

paired box gene 4|paired domain gene 4

Pathway

- [Maturity onset diabetes of the young](#)

Disease

- [Diabetes Mellitus](#)
- [Genetic Predisposition to Disease](#)
- [Insulin Resistance](#)
- [Kidney Failure](#)
- [Metabolic Syndrome X](#)
- [Renal Insufficiency](#)
- [Werner syndrome](#)