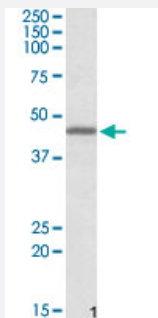


# GPR17 polyclonal antibody

Catalog # PAB18733      Size 100 ug

## Applications



### Western Blot (Tissue lysate)

GPR17 polyclonal antibody (Cat # PAB18733) (0.1 ug/mL) staining of human cerebellum lysate (35 ug protein in RIPA buffer). Primary incubation was 1 hour. Detected by chemiluminescence.

## Specification

<b>Product Description</b>	Goat polyclonal antibody raised against synthetic peptide of GPR17.
<b>Immunogen</b>	A synthetic peptide corresponding to amino acids at C-terminus of human GPR17.
<b>Sequence</b>	C-EGKTNESSLSAKSE
<b>Host</b>	Goat
<b>Theoretical MW (kDa)</b>	45
<b>Reactivity</b>	Human, Mouse, Rat
<b>Form</b>	Liquid
<b>Purification</b>	Antigen affinity purification
<b>Concentration</b>	0.5 mg/mL
<b>Recommend Usage</b>	ELISA (1:1000) Western Blot (0.1-0.3 ug/mL) The optimal working dilution should be determined by the end user.
<b>Storage Buffer</b>	In Tris saline, pH 7.3 (0.02% sodium azide, 0.5% BSA)

**Storage Instruction**

Store at -20°C.  
Aliquot to avoid repeated freezing and thawing.

**Note**

This product contains sodium azide: a POISONOUS AND HAZARDOUS SUBSTANCE which should be handled by trained staff only.

## Applications

- Western Blot (Tissue lysate)

GPR17 polyclonal antibody (Cat # PAB18733) (0.1 ug/mL) staining of human cerebellum lysate (35 ug protein in RIPA buffer). Primary incubation was 1 hour. Detected by chemiluminescence.

- Enzyme-linked Immunoabsorbent Assay

## Gene Info — GPR17

**Entrez GeneID**[2840](#)**Protein Accession#**[NP\\_005282.1](#)**Gene Name**

GPR17

**Gene Alias**

DKFZp686M18273

**Gene Description**

G protein-coupled receptor 17

**Omim ID**[603071](#)**Gene Ontology**[Hyperlink](#)**Other Designations**

-