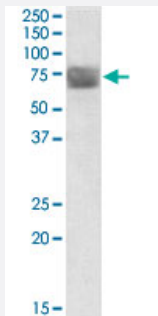


TPP1 polyclonal antibody

Catalog # PAB18724 Size 100 ug

Applications



Western Blot (Tissue lysate)

TPP1 polyclonal antibody (Cat # PAB18724) (0.3 ug/mL) staining of human placenta lysate (35 ug protein in RIPA buffer) with (B) and without (A) blocking with the immunising peptide. Primary incubation was 1 hour. Detected by chemiluminescence.

Specification

Product Description	Goat polyclonal antibody raised against synthetic peptide of TPP1.
Immunogen	A synthetic peptide corresponding to amino acids at internal region of human TPP1.
Sequence	C-TPSVIRKRYNLTSQD
Host	Goat
Theoretical MW (kDa)	65
Reactivity	Human
Form	Liquid
Purification	Antigen affinity purification
Concentration	0.5 mg/mL
Recommend Usage	ELISA (1:4000) Western Blot (0.3-1 ug/mL) The optimal working dilution should be determined by the end user.
Storage Buffer	In Tris saline, pH 7.3 (0.02% sodium azide, 0.5% BSA)

Storage Instruction

Store at -20°C.
Aliquot to avoid repeated freezing and thawing.

Note

This product contains sodium azide: a POISONOUS AND HAZARDOUS SUBSTANCE which should be handled by trained staff only.

Applications

- Western Blot (Tissue lysate)

TPP1 polyclonal antibody (Cat # PAB18724) (0.3 ug/mL) staining of human placenta lysate (35 ug protein in RIPA buffer) with (B) and without (A) blocking with the immunising peptide. Primary incubation was 1 hour. Detected by chemiluminescence.

- Enzyme-linked Immunoabsorbent Assay

Gene Info — TPP1

Entrez GeneID

[1200](#)

Protein Accession#

[NP_000382.3](#)

Gene Name

TPP1

Gene Alias

CLN2, GIG1, LPIC, MGC21297

Gene Description

tripeptidyl peptidase I

Omim ID

[204500 607998](#)

Gene Ontology

[Hyperlink](#)

Gene Summary

This gene encodes a member of the sedolisin family of serine proteases. The protease functions in the lysosome to cleave N-terminal tripeptides from substrates, and has weaker endopeptidase activity. It is synthesized as a catalytically-inactive enzyme which is activated and auto-proteolyzed upon acidification. Mutations in this gene result in late-infantile neuronal ceroid lipofuscinosis, which is associated with the failure to degrade specific neuropeptides and a subunit of ATP synthase in the lysosome. [provided by RefSeq]

Other Designations

ceroid-lipofuscinosis, neuronal 2, late infantile (Jansky-Bielschowsky disease)|growth-inhibiting protein 1|lysosomal pepstatin insensitive protease|tripeptidyl aminopeptidase|tripeptidyl-peptidase I

Pathway

- [Lysosome](#)

Disease

- [Kidney Failure](#)
- [Neuronal Ceroid-Lipofuscinoses](#)