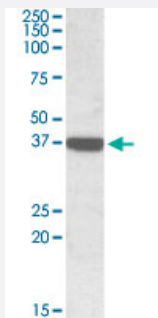


CNN3 polyclonal antibody

Catalog # PAB18717 Size 100 ug

Applications



Western Blot (Tissue lysate)

CNN3 polyclonal antibody (Cat # PAB18717) (0.3 ug/mL) staining of human duodenum lysate (35 ug protein in RIPA buffer). Primary incubation was 1 hour. Detected by chemiluminescence.

Specification

Product Description	Goat polyclonal antibody raised against synthetic peptide of CNN3.
Immunogen	A synthetic peptide corresponding to amino acids at C-terminus of human CNN3.
Sequence	C-HGEYQDDYPRDYQYS
Host	Goat
Theoretical MW (kDa)	37
Reactivity	Human
Form	Liquid
Purification	Antigen affinity purification
Concentration	0.5 mg/mL
Recommend Usage	ELISA (1:64000) Western Blot (0.2-0.6 ug/mL) The optimal working dilution should be determined by the end user.
Storage Buffer	In Tris saline, pH 7.3 (0.02% sodium azide, 0.5% BSA)

Storage Instruction

Store at -20°C.
Aliquot to avoid repeated freezing and thawing.

Note

This product contains sodium azide: a POISONOUS AND HAZARDOUS SUBSTANCE which should be handled by trained staff only.

Applications

- Western Blot (Tissue lysate)

CNN3 polyclonal antibody (Cat # PAB18717) (0.3 ug/mL) staining of human duodenum lysate (35 ug protein in RIPA buffer). Primary incubation was 1 hour. Detected by chemiluminescence.

- Enzyme-linked Immunoabsorbent Assay

Gene Info — CNN3

Entrez GeneID[1266](#)**Protein Accession#**[NP_001830.1](#)**Gene Name**

CNN3

Gene Alias

-

Gene Description

calponin 3, acidic

Omim ID[602374](#)**Gene Ontology**[Hyperlink](#)**Gene Summary**

This gene encodes a protein with a markedly acidic C terminus; the basic N-terminus is highly homologous to the N-terminus of a related gene, CNN1. Members of the CNN gene family all contain similar tandemly repeated motifs. This encoded protein is associated with the cytoskeleton but is not involved in contraction. [provided by RefSeq]

Other Designations

calponin 3|calponin, acidic|dJ639P13.2.2 (acidic calponin 3)

Disease

- [Tobacco Use Disorder](#)