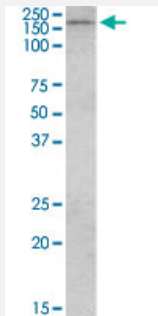


CLIP1 polyclonal antibody

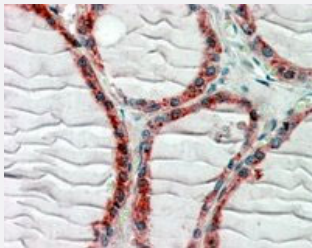
Catalog # PAB18716 Size 100 ug

Applications



Western Blot (Tissue lysate)

CLIP1 polyclonal antibody (Cat # PAB18716) (1 ug/mL) staining of human breast cancer lysate (35 ug protein in RIPA buffer). Primary incubation was 1 hour. Detected by chemiluminescence.



Immunohistochemistry (Formalin/PFA-fixed paraffin-embedded sections)

CLIP1 polyclonal antibody (Cat # PAB18716) (2.5 ug/mL) staining of paraffin embedded human thyroid gland. steamed antigen retrieval with citrate buffer pH 6, AP-staining.

Specification

Product Description	Goat polyclonal antibody raised against synthetic peptide of CLIP1.
Immunogen	A synthetic peptide corresponding to amino acids at C-terminus of human CLIP1.
Sequence	C-PHSTHHGSRGEERP
Host	Goat
Theoretical MW (kDa)	160
Reactivity	Human
Specificity	This antibody is expected to recognize both reported isoforms (NP_002947.1; NP_937883.1).

Form	Liquid
Purification	Antigen affinity purification
Concentration	0.5 mg/mL
Recommend Usage	ELISA (1:8000) Western Blot (1-3 ug/mL) Immunohistochemistry (2-4 ug/mL) The optimal working dilution should be determined by the end user.
Storage Buffer	In Tris saline, pH 7.3 (0.02% sodium azide, 0.5% BSA)
Storage Instruction	Store at -20°C. Aliquot to avoid repeated freezing and thawing.
Note	This product contains sodium azide: a POISONOUS AND HAZARDOUS SUBSTANCE which should be handled by trained staff only.

Applications

- Western Blot (Tissue lysate)

CLIP1 polyclonal antibody (Cat # PAB18716) (1 ug/mL) staining of human breast cancer lysate (35 ug protein in RIPA buffer). Primary incubation was 1 hour. Detected by chemiluminescence.

- Immunohistochemistry (Formalin/PFA-fixed paraffin-embedded sections)

CLIP1 polyclonal antibody (Cat # PAB18716) (2.5 ug/mL) staining of paraffin embedded human thyroid gland. steamed antigen retrieval with citrate buffer pH 6, AP-staining.

- Enzyme-linked Immunoabsorbent Assay

Gene Info — CLIP1

Entrez GeneID	6249
Protein Accession#	NP_002947.1;NP_937883.1
Gene Name	CLIP1
Gene Alias	CLIP, CLIP-170, CLIP170, CYLN1, MGC131604, RSN
Gene Description	CAP-GLY domain containing linker protein 1
Omim ID	179838

Gene Ontology[Hyperlink](#)**Other Designations**

Reed-Steinberg cell-expressed intermediate filament-associated protein|cytoplasmic linker 1|rest in|restin (Reed-Steinberg cell-expressed intermediate filament-associated protein)