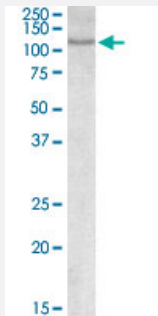


NFATC2 polyclonal antibody

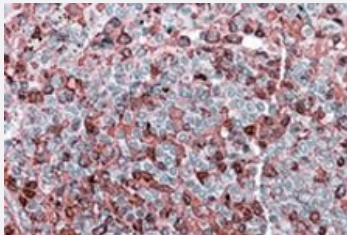
Catalog # PAB18714 Size 100 ug

Applications



Western Blot (Cell lysate)

NFATC2 polyclonal antibody (Cat # PAB18714) (0.3 ug/mL) staining of Molt 4 lysate (35 ug protein in RIPA buffer). Primary incubation was 1 hour. Detected by chemiluminescence.



Immunohistochemistry (Formalin/PFA-fixed paraffin-embedded sections)

NFATC2 polyclonal antibody (Cat # PAB18714)(3.8 ug/mL) staining of paraffin embedded human spleen. Steamed antigen retrieval with citrate buffer pH 6, AP-staining.

Specification

Product Description	Goat polyclonal antibody raised against synthetic peptide of NFATC2.
Immunogen	A synthetic peptide corresponding to amino acids at internal region of human NFATC2.
Sequence	C-QQFRTGLSSPDARYQ
Host	Goat
Theoretical MW (kDa)	110
Reactivity	Human

Specificity	This antibody is expected to recognize all three reported isoforms (NP_036472.2; NP_775114.1; NP_001129493.1).
Form	Liquid
Purification	Antigen affinity purification
Concentration	0.5 mg/mL
Recommend Usage	ELISA (1:64000) Western Blot (0.3-1 ug/mL) Immunohistochemistry (Formalin/PFA-fixed paraffin-embedded sections) (3-6 ug/mL) The optimal working dilution should be determined by the end user.
Storage Buffer	In Tris saline, pH 7.3 (0.02% sodium azide, 0.5% BSA)
Storage Instruction	Store at -20°C. Aliquot to avoid repeated freezing and thawing.
Note	This product contains sodium azide: a POISONOUS AND HAZARDOUS SUBSTANCE which should be handled by trained staff only.

Applications

- Western Blot (Cell lysate)

NFATC2 polyclonal antibody (Cat # PAB18714) (0.3 ug/mL) staining of Molt 4 lysate (35 ug protein in RIPA buffer). Primary incubation was 1 hour. Detected by chemiluminescence.

- Immunohistochemistry (Formalin/PFA-fixed paraffin-embedded sections)

NFATC2 polyclonal antibody (Cat # PAB18714)(3.8 ug/mL) staining of paraffin embedded human spleen. Steamed antigen retrieval with citrate buffer pH 6, AP-staining.

- Enzyme-linked Immunoabsorbent Assay

Gene Info — NFATC2

Entrez GeneID	4773
Protein Accession#	NP_036472.2;NP_775114.1;NP_001129493.1
Gene Name	NFATC2
Gene Alias	KIAA0611, NFAT1, NFATP
Gene Description	nuclear factor of activated T-cells, cytoplasmic, calcineurin-dependent 2

Omim ID [600490](#)

Gene Ontology [Hyperlink](#)

Gene Summary

This gene is a member of the nuclear factor of activated T cells (NFAT) family. The product of this gene is a DNA-binding protein with a REL-homology region (RHR) and an NFAT-homology region (NHR). This protein is present in the cytosol and only translocates to the nucleus upon T cell receptor (TCR) stimulation, where it becomes a member of the nuclear factors of activated T cells transcription complex. This complex plays a central role in inducing gene transcription during the immune response. Alternate transcriptional splice variants, encoding different isoforms, have been characterized. [provided by RefSeq]

Other Designations

NFAT pre-existing subunit|NFAT transcription complex, preexisting component|OTTHUMP0000031291|T cell transcription factor NFAT1|nuclear factor of activated T-cells, cytoplasmic 2|nuclear factor of activated T-cells, preexisting component|preexisting nucl

Pathway

- [Axon guidance](#)
- [B cell receptor signaling pathway](#)
- [MAPK signaling pathway](#)
- [Natural killer cell mediated cytotoxicity](#)
- [T cell receptor signaling pathway](#)
- [VEGF signaling pathway](#)
- [Wnt signaling pathway](#)

Disease

- [Cardiovascular Diseases](#)
- [Depressive Disorder](#)
- [Diabetes Mellitus](#)
- [Edema](#)
- [Genetic Predisposition to Disease](#)
- [Kidney Failure](#)
- [Narcolepsy](#)

- [Tobacco Use Disorder](#)