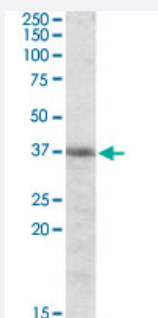


HMOX2 polyclonal antibody

Catalog # PAB18706

Size 100 ug

Applications



Western Blot (Cell lysate)

HMOX2 polyclonal antibody (Cat # PAB18706) (0.3 ug/mL) staining of K-562 cell lysate (35 ug protein in RIPA buffer). Primary incubation was 1 hour. Detected by chemiluminescence.

Specification

Product Description	Goat polyclonal antibody raised against synthetic peptide of HMOX2.
Immunogen	A synthetic peptide corresponding to amino acids at internal region of human HMOX2.
Sequence	C-DQAGSTLARETLED
Host	Goat
Theoretical MW (kDa)	37
Reactivity	Human
Specificity	Reported variants represent identical protein: NP_002125.3, NP_001120676.1, NP_001120678.1, NP_001120677.1.
Form	Liquid
Purification	Antigen affinity purification
Concentration	0.5 mg/mL

Recommend Usage	ELISA (1:32000) Western Blot (0.3-1 ug/mL) The optimal working dilution should be determined by the end user.
Storage Buffer	In Tris saline, pH 7.3 (0.02% sodium azide, 0.5% BSA)
Storage Instruction	Store at -20°C. Aliquot to avoid repeated freezing and thawing.
Note	This product contains sodium azide: a POISONOUS AND HAZARDOUS SUBSTANCE which should be handled by trained staff only.

Applications

- Western Blot (Cell lysate)

HMOX2 polyclonal antibody (Cat # PAB18706) (0.3 ug/mL) staining of K-562 cell lysate (35 ug protein in RIPA buffer). Primary incubation was 1 hour. Detected by chemiluminescence.

- Enzyme-linked Immunoabsorbent Assay

Gene Info — HMOX2

Entrez GeneID	3163
Protein Accession#	NP_002125.3
Gene Name	HMOX2
Gene Alias	HO-2
Gene Description	heme oxygenase (decycling) 2
Omim ID	141251
Gene Ontology	Hyperlink
Gene Summary	Heme oxygenase, an essential enzyme in heme catabolism, cleaves heme to form biliverdin, which is subsequently converted to bilirubin by biliverdin reductase, and carbon monoxide, a putative neurotransmitter. Heme oxygenase activity is induced by its substrate heme and by various nonheme substances. Heme oxygenase occurs as 2 isozymes, an inducible heme oxygenase-1 and a constitutive heme oxygenase-2. HMOX1 and HMOX2 belong to the heme oxygenase family. Alternative splice variants encoding the same protein have been identified at this locus. [provided by RefSeq]
Other Designations	heme oxygenase (decycling) 2

Pathway

- [Porphyrin and chlorophyll metabolism](#)

Disease

- [Alzheimer disease](#)
- [Cognition](#)
- [Coronary Artery Disease](#)
- [Genetic Predisposition to Disease](#)
- [Hypertension](#)