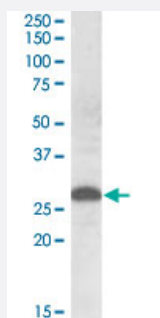


# Apom polyclonal antibody

Catalog # PAB18690      Size 100 ug

## Applications



### Western Blot (Tissue lysate)

Apom polyclonal antibody (Cat # PAB18690) (0.5 ug/mL) staining of human placenta lysate (35 ug protein in RIPA buffer). Primary incubation was 1 hour. Detected by chemiluminescence.

## Specification

Product Description	Goat polyclonal antibody raised against synthetic peptide of Apom.
Immunogen	A synthetic peptide corresponding to amino acids at internal region of mouse Apom.
Sequence	C-KGNMELRTEGRPD
Host	Goat
Theoretical MW (kDa)	26
Reactivity	Human
Form	Liquid
Purification	Antigen affinity purification
Concentration	0.5 mg/mL
Recommend Usage	ELISA (1:8000) Western Blot (0.5-1.5 ug/mL) The optimal working dilution should be determined by the end user.
Storage Buffer	In Tris saline, pH 7.3 (0.02% sodium azide, 0.5% BSA)

**Storage Instruction**

Store at -20°C.  
Aliquot to avoid repeated freezing and thawing.

**Note**

This product contains sodium azide: a POISONOUS AND HAZARDOUS SUBSTANCE which should be handled by trained staff only.

## Applications

- Western Blot (Tissue lysate)

Apom polyclonal antibody (Cat # PAB18690) (0.5 ug/mL) staining of human placenta lysate (35 ug protein in RIPA buffer). Primary incubation was 1 hour. Detected by chemiluminescence.

- Enzyme-linked Immunoabsorbent Assay

## Gene Info — Apom

**Entrez GeneID**[55938](#)**Protein Accession#**[NP\\_061286.1](#)**Gene Name**

Apom

**Gene Alias**

1190010O19Rik, G3a, NG20

**Gene Description**

apolipoprotein M

**Gene Ontology**[Hyperlink](#)**Other Designations**

-