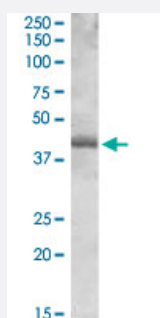


SPI1 polyclonal antibody

Catalog # PAB18680 Size 100 ug

Applications



Western Blot (Cell lysate)

SPI1 polyclonal antibody (Cat # PAB18680) (0.03 ug/mL) staining of Daudi lysate (35 ug protein in RIPA buffer). Primary incubation was 1 hour. Detected by chemiluminescence.

Specification

Product Description	Goat polyclonal antibody raised against synthetic peptide of SPI1.
Immunogen	A synthetic peptide corresponding to amino acids at internal region of human SPI1.
Sequence	C-DLYQRQTHEY
Host	Goat
Reactivity	Human
Specificity	This antibody is expected to recognise both reported isoforms (NP_001074016.1; NP_003111.2).
Form	Liquid
Purification	Antigen affinity purification
Concentration	0.5 mg/mL
Recommend Usage	ELISA (1:1000) Western Blot (0.5-1.5 ug/mL) The optimal working dilution should be determined by the end user.
Storage Buffer	In Tris saline, pH 7.3 (0.02% sodium azide, 0.5% BSA)

Storage Instruction

Store at -20°C.
Aliquot to avoid repeated freezing and thawing.

Note

This product contains sodium azide: a POISONOUS AND HAZARDOUS SUBSTANCE which should be handled by trained staff only.

Applications

- Western Blot (Cell lysate)

SPI1 polyclonal antibody (Cat # PAB18680) (0.03 ug/mL) staining of Daudi lysate (35 ug protein in RIPA buffer). Primary incubation was 1 hour. Detected by chemiluminescence.

- Enzyme-linked Immunoabsorbent Assay

Gene Info — SPI1

Entrez GeneID
[6688](#)
Protein Accession#
[NP_001074016.1;NP_003111.2](#)
Gene Name

SPI1

Gene Alias

OF, PU.1, SFPI1, SPI-1, SPIA

Gene Description

spleen focus forming virus (SFFV) proviral integration oncogene spi1

Omim ID
[165170](#)
Gene Ontology
[Hyperlink](#)
Gene Summary

This gene encodes an ETS-domain transcription factor that activates gene expression during myeloid and B-lymphoid cell development. The nuclear protein binds to a purine-rich sequence known as the PU-box found near the promoters of target genes, and regulates their expression in coordination with other transcription factors and cofactors. The protein can also regulate alternative splicing of target genes. Multiple transcript variants encoding different isoforms have been found for this gene. [provided by RefSeq]

Other Designations

31 kDa transforming protein|SPI-1 proto-oncogene|hematopoietic transcription factor PU.1

Pathway

- [Acute myeloid leukemia](#)

- [Pathways in cancer](#)

Disease

- [Leukemia](#)