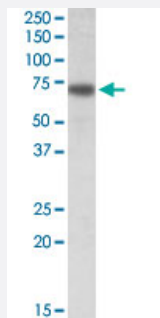


NTN1 polyclonal antibody

Catalog # PAB18663 Size 100 ug

Applications



Western Blot (Tissue lysate)

NTN1 polyclonal antibody (Cat # PAB18663) (0.5 ug/mL) staining of rat brain lysate (35 ug protein in RIPA buffer). Primary incubation was 1 hour. Detected by chemiluminescence.

Specification

Product Description	Goat polyclonal antibody raised against synthetic peptide of NTN1.
Immunogen	A synthetic peptide corresponding to amino acids at C-terminus of human NTN1.
Sequence	KFQQREKKGKCKKA
Host	Goat
Theoretical MW (kDa)	70
Reactivity	Rat
Form	Liquid
Purification	Antigen affinity purification
Concentration	0.5 mg/mL
Recommend Usage	ELISA (1:64000) Western Blot (1-3 ug/mL) The optimal working dilution should be determined by the end user.
Storage Buffer	In Tris saline, pH 7.3 (0.02% sodium azide, 0.5% BSA)

Storage Instruction

Store at -20°C.
Aliquot to avoid repeated freezing and thawing.

Note

This product contains sodium azide: a POISONOUS AND HAZARDOUS SUBSTANCE which should be handled by trained staff only.

Applications

- Western Blot (Tissue lysate)

NTN1 polyclonal antibody (Cat # PAB18663) (0.5 ug/mL) staining of rat brain lysate (35 ug protein in RIPA buffer). Primary incubation was 1 hour. Detected by chemiluminescence.

- Enzyme-linked Immunoabsorbent Assay

Gene Info — NTN1

Entrez GeneID[9423](#)**Protein Accession#**[NP_004813.2](#)**Gene Name**

NTN1

Gene Alias

NTN1L

Gene Description

netrin 1

Omim ID[601614](#)**Gene Ontology**[Hyperlink](#)**Gene Summary**

Netrin is included in a family of laminin-related secreted proteins. The function of this gene has not yet been defined; however, netrin is thought to be involved in axon guidance and cell migration during development. Mutations and loss of expression of netrin suggest that variation in netrin may be involved in cancer development. [provided by RefSeq]

Other Designations

Netrin-1|netrin 1, mouse, homolog of

Pathway

- [Axon guidance](#)