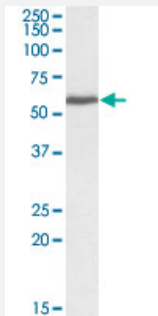


PRPF31 polyclonal antibody

Catalog # PAB18657 Size 100 ug

Applications



Western Blot (Cell lysate)

PRPF31 polyclonal antibody (Cat # PAB18657) (0.3 ug/mL) staining of A-431 lysate (35 ug protein in RIPA buffer). Primary incubation was 1 hour. Detected by chemiluminescence.

Specification

Product Description	Goat polyclonal antibody raised against synthetic peptide of PRPF31.
Immunogen	A synthetic peptide corresponding to amino acids at C-terminus of human PRPF31.
Sequence	C-LKVKGEKSGLMST
Host	Goat
Theoretical MW (kDa)	60
Reactivity	Human
Form	Liquid
Purification	Antigen affinity purification
Concentration	0.5 mg/mL
Recommend Usage	ELISA (1:32000) Western Blot (1-3 ug/mL) The optimal working dilution should be determined by the end user.
Storage Buffer	In Tris saline, pH 7.3 (0.02% sodium azide, 0.5% BSA)

Storage Instruction

Store at -20°C.
Aliquot to avoid repeated freezing and thawing.

Note

This product contains sodium azide: a POISONOUS AND HAZARDOUS SUBSTANCE which should be handled by trained staff only.

Applications

- Western Blot (Cell lysate)

PRPF31 polyclonal antibody (Cat # PAB18657) (0.3 ug/mL) staining of A-431 lysate (35 ug protein in RIPA buffer). Primary incubation was 1 hour. Detected by chemiluminescence.

- Enzyme-linked Immunoabsorbent Assay

Gene Info — PRPF31

Entrez GeneID[26121](#)**Protein Accession#**[NP_056444.3](#)**Gene Name**

PRPF31

Gene Alias

DKFZp566J153, NY-BR-99, PRP31, RP11

Gene Description

PRP31 pre-mRNA processing factor 31 homolog (S. cerevisiae)

Omim ID[600138 606419](#)**Gene Ontology**[Hyperlink](#)**Gene Summary**

This gene encodes a component of the spliceosome complex and is one of several retinitis pigmentosa-causing genes. When the gene product is added to the spliceosome complex, activation occurs

Other Designations

OTTHUMP00000068806|pre-mRNA processing factor 31 homolog

Disease

- [Retinal Diseases](#)
- [Retinitis Pigmentosa](#)