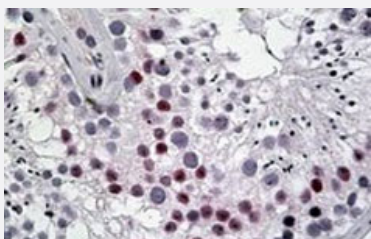


TSPYL2 polyclonal antibody

Catalog # PAB18654 Size 100 ug

Applications



Immunohistochemistry (Formalin/PFA-fixed paraffin-embedded sections)

TSPYL2 polyclonal antibody (Cat # PAB18654) (5 ug/mL) staining of paraffin embedded human testis. Steamed antigen retrieval with citrate buffer pH 6, AP-staining.

Specification

Product Description	Goat polyclonal antibody raised against synthetic peptide of TSPYL2.
Immunogen	A synthetic peptide corresponding to C-terminus of human TSPYL2.
Sequence	C-PNGWANPGKRGKTG
Host	Goat
Reactivity	Human
Form	Liquid
Purification	Antigen affinity purification
Concentration	0.5 mg/mL
Recommend Usage	ELISA (1:8000) Immunohistochemistry (Formalin/PFA-fixed paraffin-embedded sections) (5-10 ug/mL) The optimal working dilution should be determined by the end user.
Storage Buffer	In Tris saline, pH 7.3 (0.02% sodium azide, 0.5% BSA)

Storage Instruction

Store at -20°C.
Aliquot to avoid repeated freezing and thawing.

Note

This product contains sodium azide: a POISONOUS AND HAZARDOUS SUBSTANCE which should be handled by trained staff only.

Applications

- Immunohistochemistry (Formalin/PFA-fixed paraffin-embedded sections)

TSPYL2 polyclonal antibody (Cat # PAB18654) (5 ug/mL) staining of paraffin embedded human testis. Steamed antigen retrieval with citrate buffer pH 6, AP-staining.

- Enzyme-linked Immunoabsorbent Assay

Gene Info — TSPYL2

Entrez GeneID[64061](#)**Protein Accession#**[NP_071400.1](#)**Gene Name**

TSPYL2

Gene Alias

CDA1, CINAP, CTCL, DENTT, HRIHFB2216, SE20-4

Gene Description

TSPY-like 2

Omim ID[300564](#)**Gene Ontology**[Hyperlink](#)**Gene Summary**

This gene encodes a member of the testis-specific protein Y-encoded, TSPY-like/SET/nucleosome assembly protein-1 superfamily. The encoded protein is localized to the nucleolus where it functions in chromatin remodeling and as an inhibitor of cell-cycle progression. This protein may play a role in the suppression of tumor growth. [provided by RefSeq]

Other Designations

OTTHUMP00000023335|cell division autoantigen 1|cutaneous T-cell lymphoma-associated tumor antigen se20-4|differentially expressed nucleolar TGF-beta1 target protein