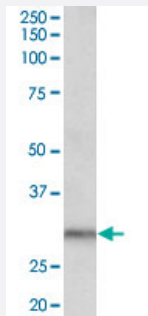


# DAPP1 polyclonal antibody

Catalog # PAB18652      Size 100 ug

## Applications



### Western Blot (Tissue lysate)

DAPP1 polyclonal antibody (Cat # PAB18652) (0.5 ug/mL) staining of human kidney lysate (35 ug protein in RIPA buffer). Primary incubation was 1 hour. Detected by chemiluminescence.

## Specification

<b>Product Description</b>	Goat polyclonal antibody raised against synthetic peptide of DAPP1.
<b>Immunogen</b>	A synthetic peptide corresponding to C-terminus of human DAPP1.
<b>Sequence</b>	SALCISPEEKTDHK
<b>Host</b>	Goat
<b>Reactivity</b>	Human
<b>Specificity</b>	This antibody was raised against the C-terminus of NP_055210.1. However, NCBI has changed the version to NP_055210.2 thus losing the C-terminal epitope.
<b>Form</b>	Liquid
<b>Purification</b>	Antigen affinity purification
<b>Concentration</b>	0.5 mg/mL
<b>Recommend Usage</b>	ELISA (1:4000) Western Blot (0.5-1 ug/mL) The optimal working dilution should be determined by the end user.

Storage Buffer	In Tris saline, pH 7.3 (0.02% sodium azide, 0.5% BSA)
Storage Instruction	Store at -20°C. Aliquot to avoid repeated freezing and thawing.
Note	This product contains sodium azide: a POISONOUS AND HAZARDOUS SUBSTANCE which should be handled by trained staff only.

## Applications

- Western Blot (Tissue lysate)

DAPP1 polyclonal antibody (Cat # PAB18652) (0.5 ug/mL) staining of human kidney lysate (35 ug protein in RIPA buffer). Primary incubation was 1 hour. Detected by chemiluminescence.

- Enzyme-linked Immunoabsorbent Assay

## Gene Info — DAPP1

Entrez GeneID	<a href="#">27071</a>
Protein Accession#	<a href="#">NP_055210.1</a>
Gene Name	DAPP1
Gene Alias	BAM32, DKFZp667E0716
Gene Description	dual adaptor of phosphotyrosine and 3-phosphoinositides
Omim ID	<a href="#">605768</a>
Gene Ontology	<a href="#">Hyperlink</a>
Other Designations	-

## Pathway

- [B cell receptor signaling pathway](#)