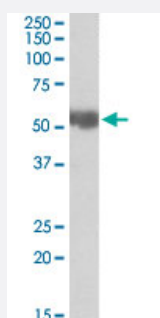


Aldh3a2 polyclonal antibody

Catalog # PAB18650 Size 100 ug

Applications



Western Blot (Tissue lysate)

Aldh3a2 polyclonal antibody (Cat # PAB18650) (0.03 ug/mL) staining of rat liver lysate (35 ug protein in RIPA buffer). Primary incubation was 1 hour. Detected by chemiluminescence.

Specification

Product Description	Goat polyclonal antibody raised against synthetic peptide of Aldh3a2.
Immunogen	A synthetic peptide corresponding to amino acids at internal region of rat Aldh3a2.
Sequence	C-KGLKGESVNKLRY
Host	Goat
Theoretical MW (kDa)	55
Reactivity	Mouse, Rat
Specificity	This antibody is expected to recognize both reported isoforms (NP_001026976.1; NP_000373.1).
Form	Liquid
Purification	Antigen affinity purification
Concentration	0.5 mg/mL
Recommend Usage	ELISA (1:32000) Western Blot (0.03-0.1 ug/mL) The optimal working dilution should be determined by the end user.

Storage Buffer	In 0.5 mg/mL Tris saline, pH 7.3 (0.02% sodium azide, 0.5% BSA)
Storage Instruction	Store at -20°C. Aliquot to avoid repeated freezing and thawing.
Note	This product contains sodium azide: a POISONOUS AND HAZARDOUS SUBSTANCE which should be handled by trained staff only.

Applications

- Western Blot (Tissue lysate)

Aldh3a2 polyclonal antibody (Cat # PAB18650) (0.03 ug/mL) staining of rat liver lysate (35 ug protein in RIPA buffer). Primary incubation was 1 hour. Detected by chemiluminescence.

- Enzyme-linked Immunoabsorbent Assay

Gene Info — Aldh3a2

Entrez GeneID	65183
Protein Accession#	NP_113919.2
Gene Name	Aldh3a2
Gene Alias	Aldh4, FALDH
Gene Description	aldehyde dehydrogenase 3 family, member A2
Gene Ontology	Hyperlink
Gene Summary	O
Other Designations	alcohol dehydrogenase family 3, subfamily A2 aldehyde dehydrogenase family 3, subfamily A2 fat ty aldehyde dehydrogenase