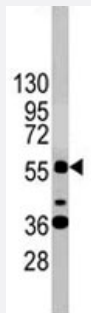


SOX9 polyclonal antibody

Catalog # PAB1865

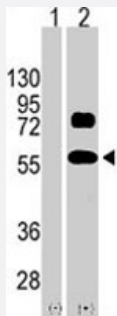
Size 400 uL

Applications



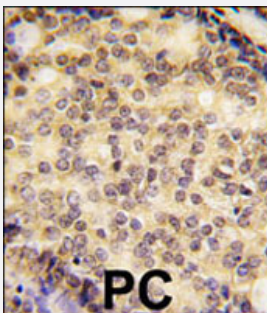
Western Blot (Cell lysate)

Western blot analysis of SOX9 polyclonal antibody (Cat # PAB1865) in K-562 cell line lysates (35 ug/lane). SOX9 (arrow) was detected using the purified polyclonal antibody.



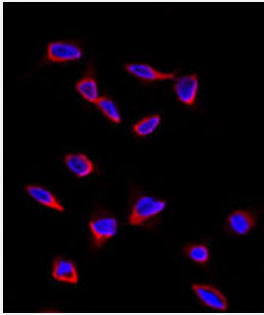
Western Blot (Transfected lysate)

Western blot analysis of SOX9 (arrow) using SOX9 polyclonal antibody (Cat # PAB1865). 293 cell lysates (2 ug/lane) either nontransfected (Lane 1) or transiently transfected with the SOX9 gene (Lane 2) (Origene Technologies).



Immunohistochemistry (Formalin/PFA-fixed paraffin-embedded sections)

Formalin-fixed and paraffin-embedded human prostate carcinoma tissue reacted with SOX9 polyclonal antibody (Cat # PAB1865), which was peroxidase-conjugated to the secondary antibody, followed by DAB staining. This data demonstrates the use of this antibody for immunohistochemistry; clinical relevance has not been evaluated.



Immunofluorescence

Immunofluorescence analysis of SOX9 polyclonal antibody (Cat # PAB1865) in HeLa cells. Primary antibody was followed by Alexa-Fluor-546-conjugated donkey anti-rabbit IgG (H+L). Alexa-Fluor-546 emits orange fluorescence. Blue counterstaining is DAPI.

Specification

Product Description	Rabbit polyclonal antibody raised against synthetic peptide of SOX9.
Immunogen	A synthetic peptide (conjugated with KLH) corresponding to N-terminus of human SOX9.
Host	Rabbit
Reactivity	Human
Form	Liquid
Purification	Ammonium sulfate precipitation
Recommend Usage	Western Blot (1:1000) Immunofluorescence (1:10-50) The optimal working dilution should be determined by the end user.
Storage Buffer	In PBS (0.09% sodium azide)
Storage Instruction	Store at 4°C. For long term storage store at -20°C. Aliquot to avoid repeated freezing and thawing.
Note	This product contains sodium azide: a POISONOUS AND HAZARDOUS SUBSTANCE which should be handled by trained staff only.

Applications

• Western Blot (Cell lysate)

Western blot analysis of SOX9 polyclonal antibody (Cat # PAB1865) in K-562 cell line lysates (35 ug/lane). SOX9 (arrow) was detected using the purified polyclonal antibody.

- Western Blot (Transfected lysate)

Western blot analysis of SOX9 (arrow) using SOX9 polyclonal antibody (Cat # PAB1865). 293 cell lysates (2 ug/lane) either nontransfected (Lane 1) or transiently transfected with the SOX9 gene (Lane 2) (Origene Technologies).

- Immunohistochemistry (Formalin/PFA-fixed paraffin-embedded sections)

Formalin-fixed and paraffin-embedded human prostate carcinoma tissue reacted with SOX9 polyclonal antibody (Cat # PAB1865) , which was peroxidase-conjugated to the secondary antibody, followed by DAB staining. This data demonstrates the use of this antibody for immunohistochemistry; clinical relevance has not been evaluated.

- Immunofluorescence

Immunofluorescence analysis of SOX9 polyclonal antibody (Cat # PAB1865) in HeLa cells. Primary antibody was followed by Alexa-Fluor-546-conjugated donkey anti-rabbit IgG (H+L). Alexa-Fluor-546 emits orange fluorescence. Blue counterstaining is DAPI.

Gene Info — SOX9

Entrez GeneID [6662](#)

Protein Accession# [NP_000337:P48436](#)

Gene Name SOX9

Gene Alias CMD1, CMPD1, SRA1

Gene Description SRY (sex determining region Y)-box 9

Omim ID [114290 608160](#)

Gene Ontology [Hyperlink](#)

Gene Summary The protein encoded by this gene recognizes the sequence CCTTGAG along with other members of the HMG-box class DNA-binding proteins. It acts during chondrocyte differentiation and, with steroidogenic factor 1, regulates transcription of the anti-Muellerian hormone (AMH) gene. Deficiencies lead to the skeletal malformation syndrome campomelic dysplasia, frequently with sex reversal. [provided by RefSeq]

Other Designations SRY (sex determining region Y)-box 9 (campomelic dysplasia, autosomal sex-reversal)|SRY (sex-determining region Y)-box 9 (campomelic dysplasia, autosomal sex-reversal)|SRY (sex-determining region Y)-box 9 protein|campomelic dysplasia, autosomal sex-reversal

Publication Reference

- [SOX9 is a key player in ultraviolet B-induced melanocyte differentiation and pigmentation.](#)

Passeron T, Valencia JC, Bertolotto C, Hoashi T, Le Pape E, Takahashi K, Ballotti R, Hearing VJ.

PNAS 2007 Aug; 104(35):13984.

Application: ICC, IF, IHC, IP, WB, Human, a-LP NHM cells, Human skin

- [Expression and biological role of the prostaglandin D synthase/SOX9 pathway in human ovarian cancer cells.](#)

Malki S, Bibeau F, Notarnicola C, Roques S, Berta P, Poulat F, Boizet-Bonhoure B.

Cancer Letters 2007 Oct; 255(2):182.

Application: IF, IHC-P, WB-Tr, Human, BG1, Cov434 cells, Ovarian tumors

Disease

- [Cleft Lip](#)
- [Cleft Palate](#)
- [Genetic Predisposition to Disease](#)
- [Hypospadias](#)
- [Ovarian Neoplasms](#)
- [Sex determination](#)