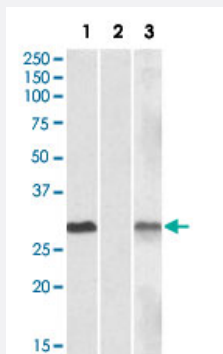


DYDC1 polyclonal antibody

Catalog # PAB18640 Size 100 ug

Applications



Western Blot (Transfected lysate)

Lane 1 - PAB18640 (1 ug/mL) staining of HEK293 overexpressing human DYDC1 lysate (10 ug protein in RIPA buffer).
 Lane 2 - PAB18640 (1 ug/mL) staining of HEK293 mock-transfected lysate (10 ug protein in RIPA buffer).
 Lane 3 - PAB18640 anti-MYC tag (1/1000) staining HEK293 overexpressing human DYDC1 lysate (10 ug protein in RIPA buffer). Primary incubations were for 1 hour. Detected by chemiluminescence.

Specification

Product Description	Goat polyclonal antibody raised against synthetic peptide of DYDC1.
Immunogen	A synthetic peptide corresponding to amino acids at internal region of human DYDC1.
Sequence	C-RNEDILHSEEATLD
Host	Goat
Reactivity	Human
Form	Liquid
Purification	Antigen affinity purification
Concentration	0.5 mg/mL
Recommend Usage	ELISA (1:16000) The optimal working dilution should be determined by the end user.
Storage Buffer	In 0.5 mg/mL Tris saline, pH 7.3 (0.02% sodium azide, 0.5% BSA)

Storage Instruction

Store at -20°C.
Aliquot to avoid repeated freezing and thawing.

Note

This product contains sodium azide: a POISONOUS AND HAZARDOUS SUBSTANCE which should be handled by trained staff only.

Applications

- Western Blot (Transfected lysate)

Lane 1 - PAB18640 (1 ug/mL) staining of HEK293 overexpressing human DYDC1 lysate (10 ug protein in RIPA buffer).

Lane 2 - PAB18640 (1 ug/mL) staining of HEK293 mock-transfected lysate (10 ug protein in RIPA buffer).

Lane 3 - PAB18640 anti-MYC tag (1/1000) staining HEK293 overexpressing human DYDC1 lysate (10 ug protein in RIPA buffer). Primary incubations were for 1 hour. Detected by chemiluminescence.

- Enzyme-linked Immunoabsorbent Assay

Gene Info — DYDC1

Entrez GeneID[143241](#)**Protein Accession#**[NP_620167.1](#)**Gene Name**

DYDC1

Gene Alias

DPY30D1, FLJ43920, bA36D19.5

Gene Description

DPY30 domain containing 1

Gene Ontology[Hyperlink](#)**Other Designations**

BC019250 protein|OTTHUMP00000019962|OTTHUMP00000019963|OTTHUMP00000059802

Disease

- [Alzheimer Disease](#)
- [Genetic Predisposition to Disease](#)