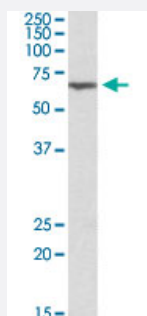


ANTXR2 polyclonal antibody

Catalog # PAB18636 Size 100 ug

Applications



Western Blot (Tissue lysate)

ANTXR2 polyclonal antibody (Cat # PAB18636) (0.3 ug/mL) staining of mouse kidney lysate (35 ug protein in RIPA buffer). Primary incubation was 1 hour. Detected by chemiluminescence.

Specification

Product Description	Goat polyclonal antibody raised against synthetic peptide of ANTXR2.
Immunogen	A synthetic peptide corresponding to amino acids at internal region of human ANTXR2.
Sequence	C-HEGLKLANEQIQK
Host	Goat
Theoretical MW (kDa)	60
Reactivity	Human, Mouse, Rat
Specificity	This antibody is expected to recognize both reported isoforms (NP_477520.2; NP_001139266.1).
Form	Liquid
Purification	Antigen affinity purification
Concentration	0.5 mg/mL
Recommend Usage	ELISA (1:16000) Western Blot (0.3-1 ug/mL) The optimal working dilution should be determined by the end user.

Storage Buffer	In 0.5 mg/mL Tris saline, pH 7.3 (0.02% sodium azide, 0.5% BSA)
Storage Instruction	Store at -20°C. Aliquot to avoid repeated freezing and thawing.
Note	This product contains sodium azide: a POISONOUS AND HAZARDOUS SUBSTANCE which should be handled by trained staff only.

Applications

- Western Blot (Tissue lysate)

ANTXR2 polyclonal antibody (Cat # PAB18636) (0.3 ug/mL) staining of mouse kidney lysate (35 ug protein in RIPA buffer). Primary incubation was 1 hour. Detected by chemiluminescence.

- Enzyme-linked Immunoabsorbent Assay

Gene Info — ANTXR2

Entrez GeneID	118429
Protein Accession#	NP_477520.2;NP_001139266.1
Gene Name	ANTXR2
Gene Alias	CMG-2, CMG2, FLJ31074, ISH, JHF, MGC111533, MGC45856
Gene Description	anthrax toxin receptor 2
Omim ID	228600 236490 608041
Gene Ontology	Hyperlink
Gene Summary	This gene encodes a receptor for anthrax toxin. The protein binds to collagen IV and laminin, suggesting that it may be involved in extracellular matrix adhesion. Mutations in this gene cause juvenile hyaline fibromatosis and infantile systemic hyalinosis. Multiple transcript variants encoding different isoforms have been found for this gene. [provided by RefSeq]
Other Designations	capillary morphogenesis protein 2

Disease

- [Celiac Disease](#)

- [Genetic Predisposition to Disease](#)
- [Spondylitis](#)