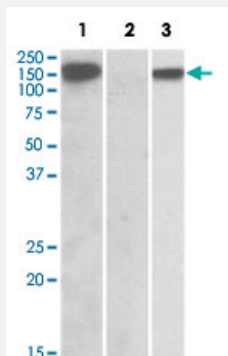


# NLRP2 polyclonal antibody

Catalog # PAB18621      Size 100 ug

## Applications



### Western Blot (Transfected lysate)

HEK293 lysate (10 ug protein in RIPA buffer) overexpressing human NLRP2 with DYKDDDDK tag probed with NLRP2 polyclonal antibody (Cat # PAB18621) (1 ug/mL) in Lane 1 and probed with anti- DYKDDDDK Tag (1/5000) in lane 3. Mock-transfected HEK293 probed with NLRP2 polyclonal antibody (Cat # PAB18621) (1 mg/mL) in Lane 2. Primary incubations were for 1 hour. Detected by chemiluminescence.

## Specification

**Product Description** Goat polyclonal antibody raised against synthetic peptide of NLRP2.

**Immunogen** A synthetic peptide corresponding to C-terminus of human NLRP2.

**Sequence** C-KNPQLIIDTEKHHP

**Host** Goat

**Reactivity** Human

**Form** Liquid

**Purification** Antigen affinity purification

**Concentration** 0.5 mg/mL

**Recommend Usage** ELISA (1:16000)  
Western Blot (1-2 ug/mL)  
The optimal working dilution should be determined by the end user.

**Storage Buffer** In 0.5 mg/mL Tris saline, pH 7.3 (0.02% sodium azide, 0.5% BSA)

**Storage Instruction**

Store at -20°C.  
Aliquot to avoid repeated freezing and thawing.

**Note**

This product contains sodium azide: a POISONOUS AND HAZARDOUS SUBSTANCE which should be handled by trained staff only.

## Applications

- Western Blot (Transfected lysate)

HEK293 lysate (10 ug protein in RIPA buffer) overexpressing human NLRP2 with DYKDDDDK tag probed with NLRP2 polyclonal antibody (Cat # PAB18621) (1 ug/mL) in Lane 1 and probed with anti- DYKDDDDK Tag (1/5000) in lane 3. Mock-transfected HEK293 probed with NLRP2 polyclonal antibody (Cat # PAB18621) (1 mg/mL) in Lane 2. Primary incubations were for 1 hour. Detected by chemiluminescence.

- Enzyme-linked Immunoabsorbent Assay

## Gene Info — NLRP2

**Entrez GeneID**[55655](#)**Protein Accession#**[NP\\_060322.1](#)**Gene Name**

NLRP2

**Gene Alias**

CLR19.9, FLJ20510, NALP2, NBS1, PAN1, PYPAF2

**Gene Description**

NLR family, pyrin domain containing 2

**Omim ID**[609364](#)**Gene Ontology**[Hyperlink](#)**Gene Summary**

NALP proteins, such as NALP2, are characterized by an N-terminal pyrin (MIM 608107) domain (PYD) and are involved in the activation of caspase-1 (CASP1; MIM 147678) by Toll-like receptors (see TLR4; MIM 603030). They may also be involved in protein complexes that activate proinflammatory caspases (Tschopp et al., 2003 [PubMed 12563287]).[supplied by OMIM]

**Other Designations**

NACHT, LRR and PYD containing protein 2|NACHT, leucine rich repeat and PYD containing 2|PYRIN-Containing APAF1-like|nucleotide-binding oligomerization domain, leucine rich repeat and pyrin domain containing 2

## Disease

- [Crohn Disease](#)
- [Genetic Predisposition to Disease](#)
- [Hematologic Neoplasms](#)
- [Recurrence](#)