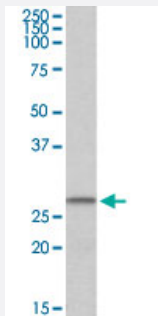


CHCHD3 polyclonal antibody

Catalog # PAB18619 Size 100 ug

Applications



Western Blot (Tissue lysate)

CHCHD3 polyclonal antibody (Cat # PAB18619) (1 ug/mL) staining of human heart lysate (35 ug protein in RIPA buffer). Primary incubation was 1 hour. Detected by chemiluminescence.

Specification

Product Description	Goat polyclonal antibody raised against synthetic peptide of CHCHD3.
Immunogen	A synthetic peptide corresponding to amino acids at internal region of human CHCHD3.
Sequence	KFKRYESHPCAD
Host	Goat
Theoretical MW (kDa)	26
Reactivity	Human
Form	Liquid
Purification	Antigen affinity purification
Concentration	0.5 mg/mL
Recommend Usage	ELISA (1:16000) Western Blot (1-3 ug/mL) The optimal working dilution should be determined by the end user.
Storage Buffer	In 0.5 mg/mL Tris saline, pH 7.3 (0.02% sodium azide, 0.5% BSA)

Storage Instruction

Store at -20°C.
Aliquot to avoid repeated freezing and thawing.

Note

This product contains sodium azide: a POISONOUS AND HAZARDOUS SUBSTANCE which should be handled by trained staff only.

Applications

- Western Blot (Tissue lysate)

CHCHD3 polyclonal antibody (Cat # PAB18619) (1 ug/mL) staining of human heart lysate (35 ug protein in RIPA buffer). Primary incubation was 1 hour. Detected by chemiluminescence.

- Enzyme-linked Immunoabsorbent Assay

Gene Info — CHCHD3

Entrez GeneID[54927](#)**Protein Accession#**[NP_060282.1](#)**Gene Name**

CHCHD3

Gene Alias

FLJ20420

Gene Description

coiled-coil-helix-coiled-coil-helix domain containing 3

Gene Ontology[Hyperlink](#)**Other Designations**

-

Disease

- [Celiac Disease](#)
- [Genetic Predisposition to Disease](#)
- [Tobacco Use Disorder](#)