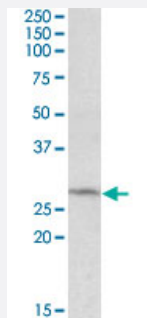


DCUN1D1 polyclonal antibody

Catalog # PAB18618 Size 100 ug

Applications



Western Blot (Cell lysate)

DCUN1D1 polyclonal antibody (Cat # PAB18618) (0.5 ug/mL) staining of HepG2 lysate (35 ug protein in RIPA buffer). Primary incubation was 1 hour. Detected by chemiluminescence.

Specification

Product Description	Goat polyclonal antibody raised against synthetic peptide of DCUN1D1.
Immunogen	A synthetic peptide corresponding to amino acids at C-terminus of human DCUN1D1.
Sequence	C-RPQIAGTKSTT
Host	Goat
Theoretical MW (kDa)	28
Reactivity	Human
Form	Liquid
Purification	Antigen affinity purification
Concentration	0.5 mg/mL
Recommend Usage	ELISA (1:16000) Western Blot (0.3-1 ug/mL) The optimal working dilution should be determined by the end user.
Storage Buffer	In 0.5 mg/mL Tris saline, pH 7.3 (0.02% sodium azide, 0.5% BSA)

Storage Instruction

Store at -20°C.
Aliquot to avoid repeated freezing and thawing.

Note

This product contains sodium azide: a POISONOUS AND HAZARDOUS SUBSTANCE which should be handled by trained staff only.

Applications

- Western Blot (Cell lysate)

DCUN1D1 polyclonal antibody (Cat # PAB18618) (0.5 ug/mL) staining of HepG2 lysate (35 ug protein in RIPA buffer). Primary incubation was 1 hour. Detected by chemiluminescence.

- Enzyme-linked Immunoabsorbent Assay

Gene Info — DCUN1D1

Entrez GeneID[54165](#)**Protein Accession#**[NP_065691.2](#)**Gene Name**

DCUN1D1

Gene Alias

DCUN1L1, RP42, SCCRO, SCRO, Tes3

Gene Description

DCN1, defective in cullin neddylation 1, domain containing 1 (S. cerevisiae)

Omim ID[605905](#)**Gene Ontology**[Hyperlink](#)**Gene Summary**

defective in cullin neddylation 1

Other Designations

RP42 homolog|squamous cell carcinoma-related oncogene

Disease

- [Dementia](#)
- [Genetic Predisposition to Disease](#)