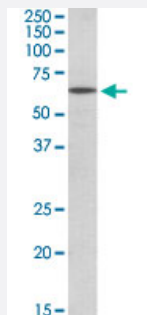


POU6F2 polyclonal antibody

Catalog # PAB18610 Size 100 ug

Applications



Western Blot (Tissue lysate)

POU6F2 polyclonal antibody (Cat # PAB18610) (0.3 ug/mL) staining of mouse eye lysate (35 ug protein in RIPA buffer). Primary incubation was 1 hour. Detected by chemiluminescence.

Specification

Product Description	Goat polyclonal antibody raised against synthetic peptide of POU6F2.
Immunogen	A synthetic peptide corresponding to amino acids at N-terminus of human POU6F2.
Sequence	RSEMNAELRGEDK-C
Host	Goat
Theoretical MW (kDa)	65
Reactivity	Mouse
Specificity	This antibody is expected to recognize both reported isoforms (NP_009183.3; NP_001159490.1).
Form	Liquid
Purification	Antigen affinity purification
Concentration	0.5 mg/mL
Recommend Usage	ELISA (1:16000) Western Blot (0.3-1 ug/mL) The optimal working dilution should be determined by the end user.

Storage Buffer	In 0.5 mg/mL Tris saline, pH 7.3 (0.02% sodium azide, 0.5% BSA)
Storage Instruction	Store at -20°C. Aliquot to avoid repeated freezing and thawing.
Note	This product contains sodium azide: a POISONOUS AND HAZARDOUS SUBSTANCE which should be handled by trained staff only.

Applications

- Western Blot (Tissue lysate)

POU6F2 polyclonal antibody (Cat # PAB18610) (0.3 ug/mL) staining of mouse eye lysate (35 ug protein in RIPA buffer). Primary incubation was 1 hour. Detected by chemiluminescence.

- Enzyme-linked Immunoabsorbent Assay

Gene Info — POU6F2

Entrez GeneID	11281
Protein Accession#	NP_009183.3;NP_001159490.1
Gene Name	POU6F2
Gene Alias	RPF-1, WT5, WTSL
Gene Description	POU class 6 homeobox 2
Omim ID	601583 609062
Gene Ontology	Hyperlink
Gene Summary	POU6F2 is a member of a gene family characterized by the presence of a bipartite DNA-binding domain, consisting of a POU-specific domain and a POU heterodomain, separated by a variable polylinker. POU domain family members are transcriptional regulators, many of which show highly restricted patterns of expression and are known to control cell type-specific differentiation pathways (see review by Phillips and Luisi, 2000 [PubMed 11183772]).[supplied by OMIM]
Other Designations	POU domain, class 6, transcription factor 2 Wilms tumor suppressor locus retina-derived POU-domain factor-1

Disease

- [Tobacco Use Disorder](#)