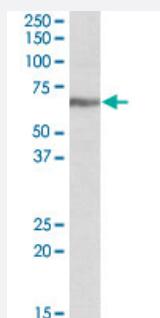


IGF2BP1 polyclonal antibody

Catalog # PAB18605 Size 100 ug

Applications



Western Blot (Cell lysate)

IGF2BP1 polyclonal antibody (Cat # PAB18605) (0.3 ug/mL) staining of K-562 lysate (35 ug protein in RIPA buffer). Primary incubation was 1 hour. Detected by chemiluminescence.

Specification

Product Description	Goat polyclonal antibody raised against synthetic peptide of IGF2BP1.
Immunogen	A synthetic peptide corresponding to amino acids at internal region of human IGF2BP1.
Sequence	C-EKVFAEHKISYSGQ
Host	Goat
Theoretical MW (kDa)	65
Reactivity	Human
Specificity	This antibody is expected to recognize both reported isoforms (NP_006537.3; NP_001153895.1).
Form	Liquid
Purification	Antigen affinity purification
Concentration	0.5 mg/mL
Recommend Usage	ELISA (1:16000) Western Blot (0.3-1 ug/mL) The optimal working dilution should be determined by the end user.

Storage Buffer	In 0.5 mg/mL Tris saline, pH 7.3 (0.02% sodium azide, 0.5% BSA)
Storage Instruction	Store at -20°C. Aliquot to avoid repeated freezing and thawing.
Note	This product contains sodium azide: a POISONOUS AND HAZARDOUS SUBSTANCE which should be handled by trained staff only.

Applications

- Western Blot (Cell lysate)

IGF2BP1 polyclonal antibody (Cat # PAB18605) (0.3 ug/mL) staining of K-562 lysate (35 ug protein in RIPA buffer). Primary incubation was 1 hour. Detected by chemiluminescence.

- Enzyme-linked Immunoabsorbent Assay

Gene Info — IGF2BP1

Entrez GeneID	10642
Protein Accession#	NP_006537.3;NP_001153895.1
Gene Name	IGF2BP1
Gene Alias	CRD-BP, CRDBP, IMP-1, IMP1, VICKZ1, ZBP1
Gene Description	insulin-like growth factor 2 mRNA binding protein 1
Omim ID	608288
Gene Ontology	Hyperlink
Gene Summary	This gene encodes a member of the insulin-like growth factor 2 mRNA-binding protein family. The protein encoded by this gene contains four K homology domains and two RNA recognition motifs. It functions by binding to the mRNAs of certain genes, including insulin-like growth factor 2, beta-actin and beta-transducin repeat-containing protein, and regulating their translation. Two transcript variants encoding different isoforms have been found for this gene. [provided by RefSeq]
Other Designations	IGF II mRNA binding protein 1 IGF-II mRNA-binding protein 1 coding region determinant-binding protein

Disease

- [Atherosclerosis](#)
- [Diabetes Mellitus](#)
- [Genetic Predisposition to Disease](#)
- [Head and Neck Neoplasms](#)
- [Insulin Resistance](#)
- [Metabolic Syndrome X](#)
- [Neoplasm Recurrence](#)
- [Neoplasms](#)
- [Obesity](#)