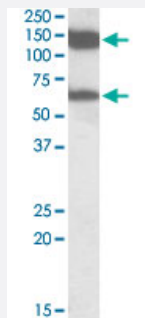


# MLLT10 polyclonal antibody

Catalog # PAB18591      Size 100 ug

## Applications



### Western Blot (Tissue lysate)

MLLT10 polyclonal antibody (Cat # PAB18591) (1 ug/mL) staining of rat testis lysate (35 ug protein in RIPA buffer). Primary incubation was 1 hour. Detected by chemiluminescence.

## Specification

<b>Product Description</b>	Goat polyclonal antibody raised against synthetic peptide of MLLT10.
<b>Immunogen</b>	A synthetic peptide corresponding to amino acids at internal region of human MLLT10.
<b>Sequence</b>	C-RLEDTTARFTNAN
<b>Host</b>	Goat
<b>Reactivity</b>	Rat
<b>Specificity</b>	This antibody is expected to recognize both reported isoforms (NP_004632.1; NP_001009569.1).
<b>Form</b>	Liquid
<b>Purification</b>	Antigen affinity purification
<b>Concentration</b>	0.5 mg/mL
<b>Recommend Usage</b>	ELISA (1:32000) Western blot (1-3 ug/mL) The optimal working dilution should be determined by the end user.
<b>Storage Buffer</b>	In 0.5 mg/mL Tris saline, pH 7.3 (0.02% sodium azide, 0.5% BSA)

**Storage Instruction**

Store at -20°C.  
Aliquot to avoid repeated freezing and thawing.

**Note**

This product contains sodium azide: a POISONOUS AND HAZARDOUS SUBSTANCE which should be handled by trained staff only.

## Applications

- Western Blot (Tissue lysate)

MLLT10 polyclonal antibody (Cat # PAB18591) (1 ug/mL) staining of rat testis lysate (35 ug protein in RIPA buffer). Primary incubation was 1 hour. Detected by chemiluminescence.

- Enzyme-linked Immunoabsorbent Assay

## Gene Info — MLLT10

**Entrez GeneID**[8028](#)**Protein Accession#**[NP\\_004632.1;NP\\_001009569.1](#)**Gene Name**

MLLT10

**Gene Alias**

AF10, DKFZp686E10210, MGC75086

**Gene Description**

myeloid/lymphoid or mixed-lineage leukemia (trithorax homolog, Drosophila); translocated to, 10

**Omim ID**[601626 602409](#)**Gene Ontology**[Hyperlink](#)**Gene Summary**

Drosophila); translocated to

**Other Designations**

ALL-1 fused gene from chromosome 10|OTTHUMP00000019275|OTTHUMP00000045273|myeloid/lymphoid or mixed-lineage leukemia (trithorax homolog); translocated to, 10|myeloid/lymphoid or mixed-lineage leukemia translocated to, 10|type I AF10 protein

## Disease

- [Cardiovascular Diseases](#)
- [Diabetes Mellitus](#)
- [Edema](#)