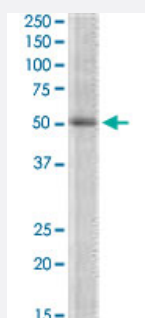


# TRIP6 polyclonal antibody

Catalog # PAB18589

Size 100 ug

## Applications



### Western Blot (Cell lysate)

TRIP6 polyclonal antibody (Cat # PAB18589) (2 ug/mL) staining of K-562 lysate (35 ug protein in RIPA buffer). Primary incubation was 1 hour. Detected by chemiluminescence.

## Specification

<b>Product Description</b>	Goat polyclonal antibody raised against synthetic peptide of TRIP6.
<b>Immunogen</b>	A synthetic peptide corresponding to amino acids at internal region of human TRIP6.
<b>Sequence</b>	C-SHGVLQHTQGLP
<b>Host</b>	Goat
<b>Theoretical MW (kDa)</b>	50
<b>Reactivity</b>	Human
<b>Form</b>	Liquid
<b>Purification</b>	Antigen affinity purification
<b>Concentration</b>	0.5 mg/mL
<b>Recommend Usage</b>	ELISA (1:16000) Western Blot (1-3 ug/mL) The optimal working dilution should be determined by the end user.
<b>Storage Buffer</b>	In 0.5 mg/mL Tris saline, pH 7.3 (0.02% sodium azide, 0.5% BSA)

**Storage Instruction**

Store at -20°C.  
Aliquot to avoid repeated freezing and thawing.

**Note**

This product contains sodium azide: a POISONOUS AND HAZARDOUS SUBSTANCE which should be handled by trained staff only.

## Applications

- Western Blot (Cell lysate)

TRIP6 polyclonal antibody (Cat # PAB18589) (2 ug/mL) staining of K-562 lysate (35 ug protein in RIPA buffer). Primary incubation was 1 hour. Detected by chemiluminescence.

- Enzyme-linked Immunoabsorbent Assay

## Gene Info — TRIP6

**Entrez GeneID**[7205](#)**Protein Accession#**[NP\\_003293.2](#)**Gene Name**

TRIP6

**Gene Alias**

MGC10556, MGC10558, MGC29959, MGC3837, MGC4423, OIP1, ZRP-1

**Gene Description**

thyroid hormone receptor interactor 6

**Omim ID**[602933](#)**Gene Ontology**[Hyperlink](#)**Gene Summary**

This gene is a member of the zyxin family and encodes a protein with three LIM zinc-binding domains. This protein localizes to focal adhesion sites and along actin stress fibers. Recruitment of this protein to the plasma membrane occurs in a lysophosphatidic acid (LPA)-dependent manner and it regulates LPA-induced cell migration. Alternatively spliced variants which encode different protein isoforms have been described; however, not all variants have been fully characterized. [provided by RefSeq]

**Other Designations**

OPA-interacting protein 1|thyroid receptor-interacting protein 6|zyxin related protein 1